

---

## Product Datasheet

### TUBA1A Antibody (orb1239102)

**Description**

TUBA1A Antibody

**Species/Host**

Rabbit

**Reactivity**

Human, Mouse, Rat

**Conjugation**

Unconjugated

**Tested Applications**

ELISA, IF, IHC-P, WB

**Immunogen**

alpha-Tubulin antibody was raised against an 18 amino acid peptide near the carboxy terminus of human alpha-Tubulin

**Target**

TUBA1A

**Preservatives**

alpha-Tubulin antibody is supplied in PBS containing 0.02% sodium azide.

**Form/Appearance**

Liquid

**Concentration**

1 mg/mL

**Storage**

alpha-Tubulin antibody can be stored at 4°C for three months and -20°C, stable for up to one year.

**Note**

For research use only

**Application notes**

alpha-Tubulin antibody can be used for detection of alpha-Tubulin by Western blot at 1 - 2 µg/ml. Antibody can also be used for Immunohistochemistry starting at 2.5 µg/mL. For immunofluorescence start at 20 µg/mL. Antibody validated: Western Blot in human, mouse, and rat samples; Immunohistochemistry in human samples and Immunofluorescence in human samples. All other applications and species not yet tested.

**Isotype**

IgG

**Clonality**

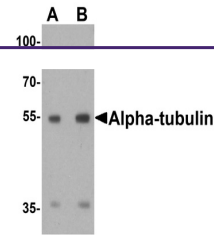
Polyclonal

**MW**

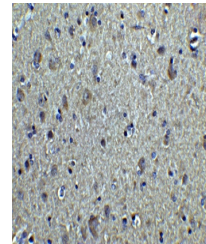
Predicted: 50 kDa Observed: 54 kDa

**NCBI**
[CAA25855](#)
**Dilution Range**

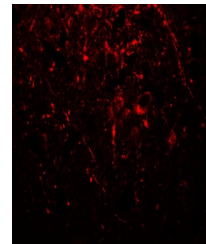
alpha-Tubulin antibody can be used for detection of alpha-Tubulin by Western blot at 1 - 2 µg/ml. Antibody can also be used for Immunohistochemistry starting at 2.5 µg/mL. For immunofluorescence start at 20 µg/mL. Antibody validated: Western Blot in human, mouse, and rat samples; Immunohistochemistry in human samples and Immunofluorescence in human samples. All other applications and species not yet tested.



Western blot analysis of alpha-Tubulin i...



Immunohistochemistry of alpha-Tubulin in...



Immunofluorescence of alpha-Tubulin in h...