
Product Datasheet

UBA2 Antibody (orb1239100)

Description

UBA2 Antibody

Species/Host

Rabbit

Reactivity

Human

Conjugation

Unconjugated

Tested Applications

ELISA, ICC, IF, WB

Immunogen

SAE2 antibody was raised against an 18 amino acid synthetic peptide near the carboxy terminus of human SAE2. The immunogen is located within amino acids 550 - 600 of SAE2.

Target

UBA2

Preservatives

SAE2 Antibody is supplied in PBS containing 0.02% sodium azide.

Form/Appearance

Liquid

Concentration

1 mg/mL

Storage

SAE2 antibody can be stored at 4°C for three months and -20°C, stable for up to one year. As with all antibodies care should be taken to avoid repeated freeze thaw cycles. Antibodies should not be exposed to prolonged high temperatures.

Note

For research use only

Application notes

SAE2 antibody can be used for detection of SAE2 by Western blot at 0.25 µg/mL. Antibody can also be used for immunocytochemistry starting at 4 µg/mL. For immunofluorescence start at 5 µg/mL. Antibody validated: Western Blot in human samples; Immunocytochemistry in human samples and Immunofluorescence in human samples. All other applications and species not yet tested.

Isotype

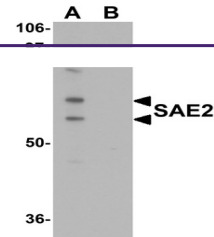
IgG

Clonality

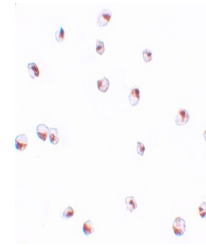
Polyclonal

Uniprot ID
[Q9UBT2](#)
NCBI
[NP_005490](#)
Dilution Range

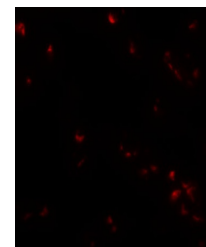
SAE2 antibody can be used for detection of SAE2 by Western blot at 0.25 µg/mL. Antibody can also be used for immunocytochemistry starting at 4 µg/mL. For immunofluorescence start at 5 µg/mL. Antibody validated: Western Blot in human samples; Immunocytochemistry in human samples and



Western blot analysis of SAE2 in 293 cel...



Immunocytochemistry of SAE2 in 293 cells...



Immunofluorescence of SAE2 in 293 cells ...