
Product Datasheet

DLGAP1 Antibody (orb1239096)

Description

DLGAP1 Antibody

Species/Host

Rabbit

Reactivity

Human, Mouse, Rat

Conjugation

Unconjugated

Tested

ELISA, IF, IHC-P, WB

Applications
Immunogen

SAPAP1 antibody was raised against a 18 amino acid synthetic peptide from near the center of human SAPAP1. The immunogen is located within amino acids 640 - 690 of SAPAP1.

Target

DLGAP1

Preservatives

SAPAP1 Antibody is supplied in PBS containing 0.02% sodium azide.

Form/Appearance

Liquid

Concentration

1 mg/mL

Storage

SAPAP1 antibody can be stored at 4°C for three months and -20°C, stable for up to one year. As with all antibodies care should be taken to avoid repeated freeze thaw cycles. Antibodies should not be exposed to prolonged high temperatures.

Note

For research use only

Application notes

SAPAP1 antibody can be used for detection of SAPAP1 by Western blot at 0.5 - 1 µg/mL. Antibody can also be used for immunohistochemistry starting at 5 µg/mL. For immunofluorescence start at 20 µg/mL. Antibody validated: Western Blot in rat samples; Immunohistochemistry in human samples and Immunofluorescence in human samples. All other applications and species not yet tested.

Isotype

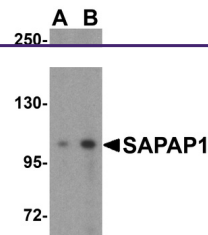
IgG

Clonality

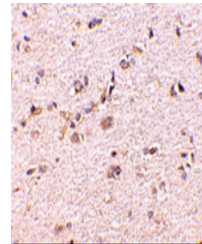
Polyclonal

Uniprot ID
O60500
NCBI
NP_004737
Dilution Range

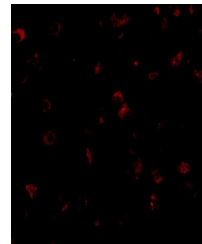
SAPAP1 antibody can be used for detection of SAPAP1 by Western blot at 0.5 - 1 µg/mL. Antibody can also be used for immunohistochemistry starting at 5 µg/mL. For immunofluorescence start at 20 µg/mL. Antibody validated: Western Blot in rat samples; Immunohistochemistry in human samples



Western blot analysis of SAPAP1 in rat b...



Immunohistochemistry of SAPAP1 in human ...



Immunofluorescence of SAPAP1 in Human Br...