
Product Datasheet

DLGAP2 Antibody (orb1239095)

Description

DLGAP2 Antibody

Species/Host

Rabbit

Reactivity

Human, Mouse, Rat

Conjugation

Unconjugated

Tested Applications

ELISA, IF, IHC-P, WB

Immunogen

SAPAP2 antibody was raised against a 16 amino acid synthetic peptide from near the center of human SAPAP2. The immunogen is located within amino acids 480 - 530 of SAPAP2.

Target

DLGAP2

Preservatives

SAPAP2 Antibody is supplied in PBS containing 0.02% sodium azide.

Form/Appearance

Liquid

Concentration

1 mg/mL

Storage

SAPAP2 antibody can be stored at 4°C for three months and -20°C, stable for up to one year. As with all antibodies care should be taken to avoid repeated freeze thaw cycles. Antibodies should not be exposed to prolonged high temperatures.

Note

For research use only

Application notes

SAPAP2 antibody can be used for detection of SAPAP2 by Western blot at 0.5 - 1 µg/mL. Antibody can also be used for immunohistochemistry starting at 5 µg/mL. For immunofluorescence start at 20 µg/mL. Antibody validated: Western Blot in human samples; Immunohistochemistry in human samples and Immunofluorescence in human samples. All other applications and species not yet tested.

Isotype

IgG

Clonality

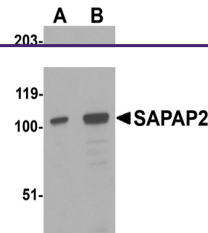
Polyclonal

MW

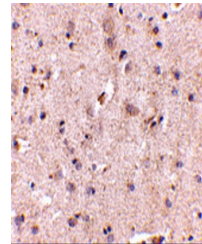
Predicted: 43 kDa Observed: 52 kDa

Uniprot ID
[Q9P1A6](#)
NCBI
[Q9P1A6](#)
Dilution Range

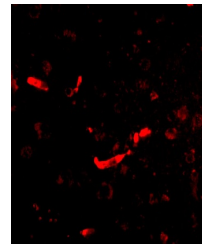
SAPAP2 antibody can be used for detection of SAPAP2 by Western blot at 0.5 - 1 µg/mL. Antibody can also be used for immunohistochemistry starting at 5 µg/mL. For immunofluorescence start at 20 µg/mL. Antibody validated: Western Blot in human



Western blot analysis of SAPAP2 in Raji ...



Immunohistochemistry of SAPAP2 in human ...



Immunofluorescence of SAPAP2 in Human Br...