
Product Datasheet

DLGAP3 Antibody (orb1239094)

Description

DLGAP3 Antibody

Species/Host

Rabbit

Reactivity

Human, Mouse, Rat

Conjugation

Unconjugated

Tested Applications

ELISA, IF, IHC-P, WB

Immunogen

SAPAP3 antibody was raised against a 18 amino acid synthetic peptide from near the carboxy terminus of human SAPAP3. The immunogen is located within the last 50 amino acids of SAPAP3.

Target

DLGAP3

Preservatives

SAPAP3 Antibody is supplied in PBS containing 0.02% sodium azide.

Form/Appearance

Liquid

Concentration

1 mg/mL

Storage

SAPAP3 antibody can be stored at 4°C for three months and -20°C, stable for up to one year. As with all antibodies care should be taken to avoid repeated freeze thaw cycles. Antibodies should not be exposed to prolonged high temperatures.

Note

For research use only

Application notes

SAPAP3 antibody can be used for detection of SAPAP3 by Western blot at 1 µg/mL. Antibody can also be used for immunohistochemistry starting at 2.5 µg/mL. For immunofluorescence start at 20 µg/mL. Antibody validated: Western Blot in rat samples; Immunohistochemistry in human samples and Immunofluorescence in human samples. All other applications and species not yet tested.

Isotype

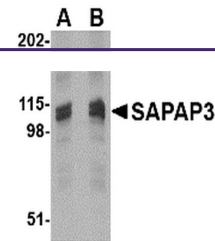
IgG

Clonality

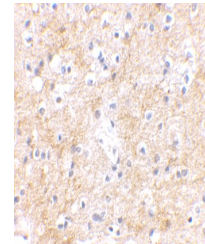
Polyclonal

Uniprot ID
[O95886](#)
NCBI
[O95886](#)
Dilution Range

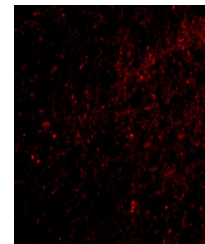
SAPAP3 antibody can be used for detection of SAPAP3 by Western blot at 1 µg/mL. Antibody can also be used for immunohistochemistry starting at 2.5 µg/mL. For immunofluorescence start at 20 µg/mL. Antibody validated: Western Blot in rat samples; Immunohistochemistry in human samples



Western blot analysis of SAPAP3 in rat b...



Immunohistochemical staining of human br...



Immunofluorescence of SAPAP3 in human br...