
Product Datasheet

SARM1 Antibody (orb1239093)

Description

SARM1 Antibody

Species/Host

Rabbit

Reactivity

Human, Mouse

Conjugation

Unconjugated

Tested Applications

ELISA, ICC, IF, WB

Immunogen

SARM antibody was raised against a peptide corresponding to 14 amino acids near the C-terminus of human SARM. The immunogen is located within amino acids 640 - 690 of SARM.

Target

SARM1

Preservatives

SARM Antibody is supplied in PBS containing 0.02% sodium azide.

Form/Appearance

Liquid

Concentration

1 mg/mL

Storage

SARM antibody can be stored at 4°C up to one year. Antibodies should not be exposed to prolonged high temperatures.

Note

For research use only

Application notes

SARM antibody can be used for detection of SARM by Western blot at 0.5 to 1 µg/mL. Antibody can also be used for immunocytochemistry starting at 2 µg/mL. For immunofluorescence start at 2 µg/mL. Antibody validated: Western Blot in human samples; Immunocytochemistry in human samples and Immunofluorescence in human samples. All other applications and species not yet tested.

Isotype

IgG

Clonality

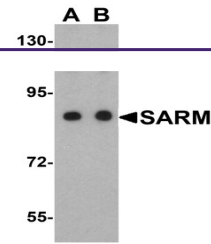
Polyclonal

MW

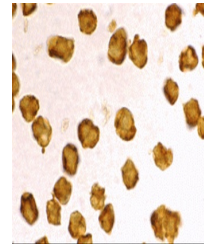
Predicted: 80 kDa Observed: 85 kDa

Uniprot ID
[Q6SZW1](#)
NCBI
[NP_055892](#)
Dilution Range

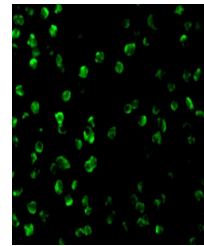
SARM antibody can be used for detection of SARM by Western blot at 0.5 to 1 µg/mL. Antibody can also be used for immunocytochemistry starting at 2 µg/mL. For immunofluorescence start at 2 µg/mL. Antibody validated: Western Blot in human samples; Immunocytochemistry in human samples and Immunofluorescence in human samples. All other



Western blot analysis of SARM in Daudi c...



Immunocytochemistry staining of Daudi ce...



Immunofluorescence of SARM in Daudi cell...