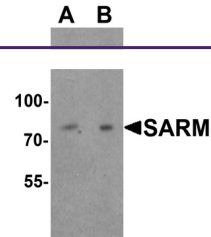
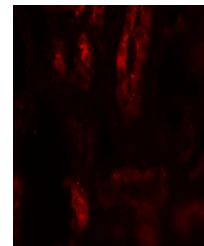

Product Datasheet

SARM1 Antibody (orb1239092)

Description	SARM1 Antibody
Species/Host	Rabbit
Reactivity	Human, Mouse, Rat
Conjugation	Unconjugated
Tested Applications	ELISA, IF, WB
Immunogen	SARM antibody was raised against a 16 amino acid synthetic peptide near the amino terminus of human SARM. The immunogen is located within amino acids 30 - 80 of SARM.
Target	SARM1
Preservatives	SARM Antibody is supplied in PBS containing 0.02% sodium azide.
Form/Appearance	Liquid
Concentration	1 mg/mL
Storage	SARM antibody can be stored at 4°C for three months and -20°C, stable for up to one year. As with all antibodies care should be taken to avoid repeated freeze thaw cycles. Antibodies should not be exposed to prolonged high temperatures.
Note	For research use only
Application notes	SARM antibody can be used for detection of SARM by Western blot at 1 - 2 µg/mL. For immunofluorescence start at 20 µg/mL. Antibody validated: Western Blot in human samples and Immunofluorescence in human samples. All other applications and species not yet tested.
Isotype	IgG
Clonality	Polyclonal
Uniprot ID	Q6SZW1
NCBI	NP_055892
Dilution Range	SARM antibody can be used for detection of SARM by Western blot at 1 - 2 µg/mL. For immunofluorescence start at 20 µg/mL. Antibody validated: Western Blot in human samples and Immunofluorescence in human samples. All other applications and species not yet tested.
Expiration Date	12 months from date of receipt.



Western blot analysis of SARM in Daudi c...



Immunofluorescence of SARM in human kidn...