
Product Datasheet

APOE Antibody (orb1239091)

Description

APOE Antibody

Species/Host

Rabbit

Reactivity

Human, Mouse, Rat

Conjugation

Unconjugated

Tested Applications

ELISA, IF, IHC-P, WB

Immunogen

APO-E antibody was raised against a 19 amino acid peptide near the carboxy terminus of human APO-E. The immunogen is located within amino acids 220 - 270 of APO-E.

Target

APOE

Preservatives

APO-E Antibody is supplied in PBS containing 0.02% sodium azide.

Form/Appearance

Liquid

Concentration

1 mg/mL

Storage

APO-E antibody can be stored at 4°C for three months and -20°C, stable for up to one year.

Note

For research use only

Application notes

APO-E antibody can be used for detection of APO-E by Western blot at 1 - 2 µg/mL. Antibody can also be used for immunohistochemistry starting at 5 µg/mL. For immunofluorescence start at 20 µg/mL. Antibody validated: Western Blot in human samples; Immunohistochemistry in human and mouse samples and Immunofluorescence in mouse samples. All other applications and species not yet tested.

Isotype

IgG

Clonality

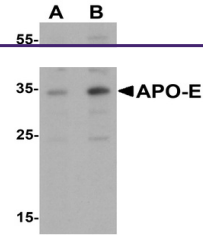
Polyclonal

MW

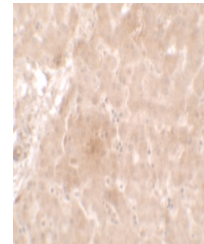
Predicted: 35 kDa Observed: 34 kDa

Uniprot ID
[P02649](#)
NCBI
[NP_000032](#)
Dilution Range

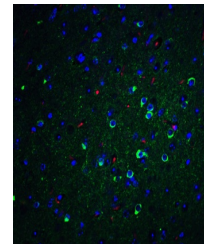
APO-E antibody can be used for detection of APO-E by Western blot at 1 - 2 µg/mL. Antibody can also be used for immunohistochemistry starting at 5 µg/mL. For immunofluorescence start at 20 µg/mL. Antibody validated: Western Blot in human samples; Immunohistochemistry in human and mouse samples and Immunofluorescence in mouse samples. All other applications and species not yet tested.



Western blot analysis of APO-E in human ...



Immunohistochemistry of APO-E in human li...



Immunofluorescence of APO E in mouse bra...