
Product Datasheet

SARS-CoV-2 (COVID-19) Membrane Antibody (orb1239084)

Description

SARS-CoV-2 (COVID-19) Membrane Antibody

Species/Host

Rabbit

Reactivity

Virus

Conjugation

Unconjugated

Tested Applications

ELISA, IHC, WB

Immunogen

Anti-SARS-CoV-2 (COVID-19) Membrane antibody (orb1239084) was raised against a peptide corresponding to 13 amino acids near the center of SARS-CoV-2 (COVID-19) Membrane protein. The immunogen is located between 130-180 amino acids of the SARS-CoV-2 (COVID-19) Membrane protein.

Target

M

Preservatives

SARS-CoV-2 (COVID-19) Membrane Antibody is supplied in PBS containing 0.02% sodium azide.

Form/Appearance

Liquid

Concentration

1 mg/mL

Storage

SARS-CoV-2 (COVID-19) Membrane antibody can be stored at 4°C up to one year. Antibodies should not be exposed to prolonged high temperatures.

Note

For research use only

Isotype

IgG

Clonality

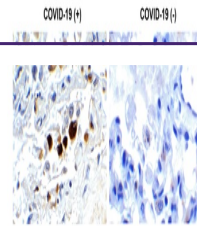
Polyclonal

NCBI
[QJW69073](#)
Dilution Range

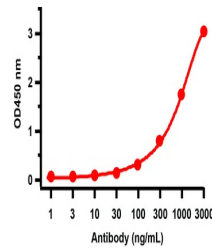
WB: 0.25 µg/mL; IHC: 0.5 µg/mL Antibody validated: Immunohistochemistry in human samples. SARS-CoV-2 (COVID-19) Membrane antibody can detect 2 ng of free peptide at 1 µg/mL in ELISA. It can detect SARS-CoV-2 Membrane recombinant protein by ELISA and WB. All other applications and species not yet tested.

Expiration Date

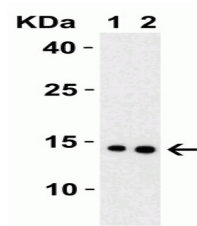
12 months from date of receipt.



Immunohistochemistry
Validation of SARS-...



ELISA Validation with
SARS-CoV-2 (COVID-...



Western Blot
Validation with SARS-
CoV-2 ...