

---

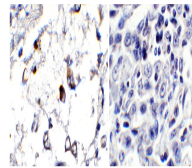
## Product Datasheet

### **SARS-CoV-2 (COVID-19) Membrane Antibody (HRP) (orb1239083)**

**Description**

SARS-CoV-2 (COVID-19) Membrane Antibody

COVID-19 (+)      COVID-19 (-)


**Species/Host**

Rabbit

**Reactivity**

Virus

**Conjugation**

HRP

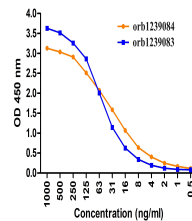
**Tested Applications**

ELISA, IHC

 Immunohistochemistry  
Validation of SARS-...

**Immunogen**

Anti-SARS-CoV-2 (COVID-19) Membrane antibody (HRP) (9157) was raised against a peptide corresponding to 13 amino acids near the center of SARS-CoV-2 (COVID-19) Membrane protein. The immunogen is located between 130-180 amino acids of the SARS-CoV-2 (COVID-19) Membrane protein.


**Target**

M

ELISA

**Preservatives**

SARS-CoV-2 (COVID-19) Membrane Antibody is supplied in PBS containing 0.02% sodium azide.

 Validation.Coating  
Antigen: immuno...

**Form/Appearance**

Liquid

**Concentration**

1 mg/mL

**Storage**

SARS-CoV-2 (COVID-19) Membrane antibody can be stored at 4 °C for three months and -20 °C, stable for up to one year. As with all antibodies care should be taken to avoid repeated freeze thaw cycles. Antibodies should not be exposed to prolonged high temperatures.

**Note**

For research use only

**Application notes**

IHC: 2 µg/mL Antibody validated: Immunohistochemistry in COVID-19 patient samples. All other applications and species not yet tested.

**Isotype**

IgG

**Clonality**

Polyclonal

**Uniprot ID**
[P0DTC5](#)
**NCBI**
[QJW69073](#)
**Dilution Range**

IHC: 2 µg/mL Antibody validated: Immunohistochemistry in COVID-19 patient samples. All other applications and species