

## Product Datasheet

### SARS-CoV-2 (COVID-19) Membrane Antibody (biotin) (orb1239081)

<b>Description</b>	SARS-CoV-2 (COVID-19) Membrane Antibody (biotin)
<b>Species/Host</b>	Rabbit
<b>Reactivity</b>	Virus
<b>Conjugation</b>	Biotin
<b>Tested Applications</b>	ELISA, IHC
<b>Immunogen</b>	Anti-SARS-CoV-2 (COVID-19) Membrane antibody (biotin) (9157) was raised against a peptide corresponding to 13 amino acids near the center of SARS-CoV-2 (COVID-19) Membrane protein. The immunogen is located between 130-180 amino acids of the SARS-CoV-2 (COVID-19) Membrane protein.
<b>Target</b>	M
<b>Preservatives</b>	SARS-CoV-2 (COVID-19) Membrane Antibody is supplied in PBS containing 0.02% sodium azide.
<b>Form/Appearance</b>	Liquid
<b>Concentration</b>	1 mg/mL
<b>Storage</b>	SARS-CoV-2 (COVID-19) Membrane antibody can be stored at 4 ° C for three months and -20 ° C, stable for up to one year. As with all antibodies care should be taken to avoid repeated freeze thaw cycles. Antibodies should not be exposed to prolonged high temperatures.
<b>Note</b>	For research use only
<b>Application notes</b>	IHC: 2 µg/mL Antibody validated: Immunohistochemistry in COVID-19 patient samples. All other applications and species not yet tested.
<b>Isotype</b>	IgG

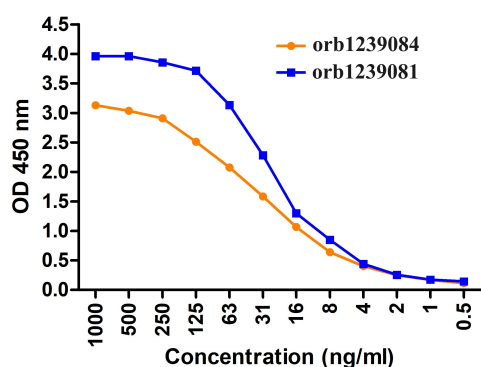
#### Biorbyt Ltd.

7 Signet Court, Swann's Road,  
Cambridge, CB5 8LA, United Kingdom  
Email: [info@biorbyt.com](mailto:info@biorbyt.com), [support@biorbyt.com](mailto:support@biorbyt.com)  
Phone: [+44 \(0\) 1223 859-353](tel:+441223859353) | Fax: [+1 \(415\) 651-8558](tel:+14156518558)

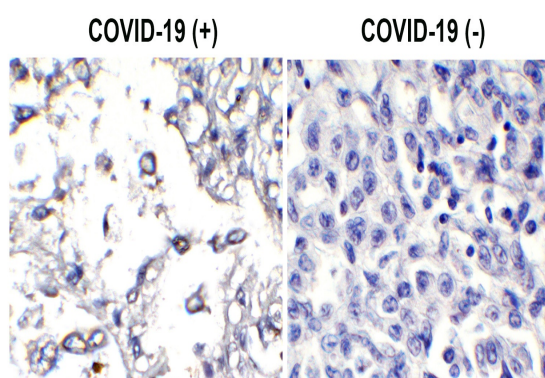
#### Biorbyt LLC.

68 TW Alexander Drive,  
Durham, NC, 27713, United States  
Email: [info@biorbyt.com](mailto:info@biorbyt.com), [support@biorbyt.com](mailto:support@biorbyt.com)  
Phone: [+1 \(415\) 906-5211](tel:+14159065211) | Fax: [+1 \(415\) 651-8558](tel:+14156518558)

<b>Clonality</b>	Polyclonal
<b>Uniprot ID</b>	<b>P0DTC5</b>
<b>NCBI</b>	<b>QJW69073</b>
<b>Expiration Date</b>	12 months from date of receipt.



ELISA Validation. Coating Antigen: immunogen peptide, orb1231692, 10 µg/mL, incubate at 4°C overnight. Detection Antibodies: SARS-CoV-2 Spike antibody, orb1239081 or orb1239084, dilution: 0.5-1000 ng/mL, incubate at RT for 1 hr. orb1239081 was detected by HRP-conjugated streptavidin at 1:5000 and orb1239084 was detected by anti-rabbit HRP conjugated secondary antibodies at 1:10,000, incubate at RT for 1 hr.



Immunohistochemistry Validation of SARS-CoV-2 (COVID-19) Membrane Protein in COVID-19 Patient Lung. Immunohistochemical analysis of paraffin-embedded COVID-19 patient lung tissue using anti-SARS-CoV-2 (COVID-19) membrane antibody (orb1239083, 2 µg/mL). Tissue was fixed with formaldehyde and blocked with 10% serum for 1 h at RT; antigen retrieval was by heat mediation with a citrate buffer (pH6). Samples were incubated with primary antibody overnight at 4°C, followed by streptavidin-HRP conjugate at 20 µg/mL. Counter stained with Hematoxylin. SARS-COV-2 membrane protein was observed in macrophages of COVID-19 patient lung, but not in non-COVID-19 patient lung.

#### Biorbyt Ltd.

7 Signet Court, Swann's Road,  
Cambridge, CB5 8LA, United Kingdom  
Email: [info@biorbyt.com](mailto:info@biorbyt.com), [support@biorbyt.com](mailto:support@biorbyt.com)  
Phone: [+44 \(0\) 1223 859-353](tel:+441223859353) | Fax: [+1 \(415\) 651-8558](tel:+14156518558)

#### Biorbyt LLC.

68 TW Alexander Drive,  
Durham, NC, 27713, United States  
Email: [info@biorbyt.com](mailto:info@biorbyt.com), [support@biorbyt.com](mailto:support@biorbyt.com)  
Phone: [+1 \(415\) 906-5211](tel:+14159065211) | Fax: [+1 \(415\) 651-8558](tel:+14156518558)