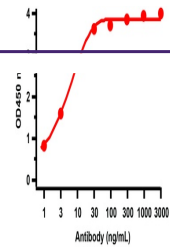
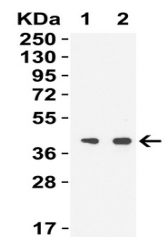

Product Datasheet

NSP15 Antibody (orb1239076)

Description	NSP15 Antibody
Species/Host	Rabbit
Reactivity	Virus
Conjugation	Unconjugated
Tested Applications	ELISA, WB
Immunogen	Anti-SARS-CoV-2 (COVID-19) NSP15 antibody (orb1239076) was raised against a peptide corresponding to 15 amino acids near the carboxyl terminus of SARS-CoV-2 (COVID-19) NSP15 protein. The immunogen is located within the last 50 amino acids of the SARS-CoV-2 (COVID-19) NSP15 protein.
Target	NSP15
Preservatives	SARS-CoV-2 (COVID-19) NSP15 antibody is supplied in PBS containing 0.02% sodium azide.
Form/Appearance	Liquid
Concentration	1 mg/mL
Storage	SARS-CoV-2 (COVID-19) NSP15 antibody can be stored at 4°C for three months and -20°C, stable for up to one year. As with all antibodies care should be taken to avoid repeated freeze thaw cycles. Antibodies should not be exposed to prolonged high temperatures.
Note	For research use only
Isotype	IgG
Clonality	Polyclonal
Uniprot ID	P0DTC1
Dilution Range	WB: 0.5-1 µg/mL Antibody validated: SARS-CoV-2 (COVID-19) NSP15 antibody can detect 2 ng of free peptide at 1 µg/mL in ELISA. It can detect SARS-CoV-2 NSP15 recombinant protein by ELISA and WB. All other applications and species not yet tested.
Expiration Date	12 months from date of receipt.



ELISA Validation with SARS-CoV-2 (COVID-...)



Western Blot Validation with SARS-CoV-2 ...