

---

## Product Datasheet

### 3CL-PRO Antibody (orb1239073)

**Description**

3CL-PRO Antibody

**Species/Host**

Rabbit

**Reactivity**

Virus

**Conjugation**

Unconjugated

**Tested Applications**

ELISA, IHC, WB

**Immunogen**

Anti-SARS-CoV-2 (COVID-19) 3CL-PRO (NSP5) antibody (orb1239073) was raised against a peptide corresponding to 16 amino acids near the amino terminus of SARS-CoV-2 (COVID-19) 3CL-Pro (NSP5) protein. The immunogen is located within the first 50 amino acids of the SARS-CoV-2 (COVID-19) 3CL-Pro (NSP5) protein.

**Target**

3CL-PRO

**Preservatives**

SARS-CoV-2 (COVID-19) 3CL-PRO (NSP5) Antibody is supplied in PBS containing 0.02% sodium azide.

**Form/Appearance**

Liquid

**Concentration**

1 mg/mL

**Storage**

SARS-CoV-2 (COVID-19) 3CL-PRO (NSP5) antibody can be stored at 4 °C for three months and -20 °C, stable for up to one year. As with all antibodies care should be taken to avoid repeated freeze thaw cycles. Antibodies should not be exposed to prolonged high temperatures.

**Note**

For research use only

**Isotype**

IgG

**Clonality**

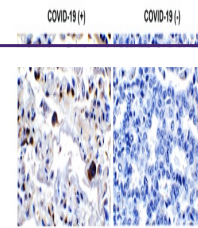
Polyclonal

**Uniprot ID**
[P0DTC1](#)
**NCBI**
[YP\\_009742612.1](#)
**Dilution Range**

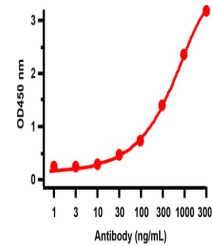
IHC: 0.5 µg/mL; WB: 0.5 µg/mL Antibody validated: Immunohistochemistry in human samples. SARS-CoV-2 (COVID-19) 3CL-PRO (NSP5) antibody can detect 2 ng of free peptide at 1 µg/mL in ELISA. It can detect SARS-CoV-2 NSP5 recombinant protein by ELISA and WB. All other applications and species not yet tested.

**Expiration Date**

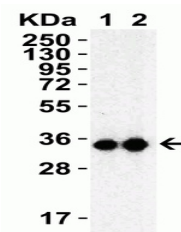
12 months from date of receipt.



Immunohistochemistry  
Validation of SARS-...



ELISA Validation with  
SARS-CoV-2 (COVID-...



Western Blot  
Validation with SARS-  
CoV-2 ...