
Product Datasheet

ORF8 Antibody (orb1239058)

Description

ORF8 Antibody

Species/Host

Rabbit

Reactivity

Virus

Conjugation

Unconjugated

Tested Applications

ELISA, IHC, WB

Immunogen

Anti-SARS-CoV-2 (COVID-19) ORF8 antibody (orb1239058) was raised against a peptide corresponding to 14 amino acids near carboxyl terminus of SARS-CoV-2 (COVID-19) ORF8 protein. The immunogen is located within the last 50 amino acids of the SARS-CoV-2 (COVID-19) ORF8 protein.

Target

ORF8

Preservatives

SARS-CoV-2 (COVID-19) ORF8 antibody is supplied in PBS containing 0.02% sodium azide.

Form/Appearance

Liquid

Concentration

1 mg/mL

Storage

SARS-CoV-2 (COVID-19) ORF8 antibody can be stored at 4°C for three months and -20°C, stable for up to one year. As with all antibodies care should be taken to avoid repeated freeze thaw cycles. Antibodies should not be exposed to prolonged high temperatures.

Note

For research use only

Isotype

IgG

Clonality

Polyclonal

MW

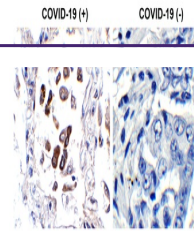
14kD

Uniprot ID
[P0DTC8](#)
NCBI
[P0DTC8](#)
Dilution Range

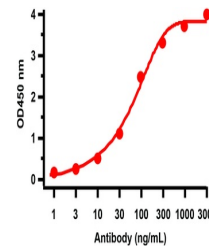
WB: 1 µg/mL; IHC: 0.1 µg/mL Antibody validated: Immunohistochemistry in human samples. SARS-CoV-2 (COVID-19) ORF8 antibody can detect 2 ng of free peptide at 1 µg/mL in ELISA. It can detect SARS-CoV-2 ORF8 recombinant protein by ELISA and WB. All other applications and species not yet tested.

Expiration Date

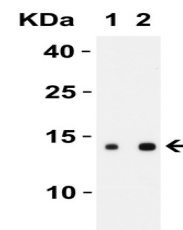
12 months from date of receipt.



Immunohistochemistry Validation of SARS-...



ELISA Validation with SARS-CoV-2 (COVID-...



Western Blot Validation with SARS-CoV-2 ...