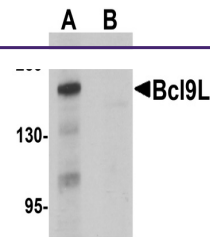

Product Datasheet

BCL9L Antibody (orb1239054)

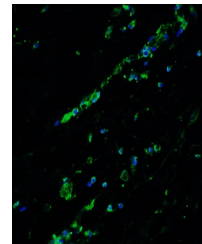
Description	BCL9L Antibody
Species/Host	Rabbit
Reactivity	Human
Conjugation	Unconjugated
Tested Applications	ELISA, ICC, IF, IHC-P, WB
Immunogen	Bcl9L antibody was raised against a 20 amino acid synthetic peptide near the amino terminus of human Bcl9L. The immunogen is located within amino acids 20 - 70 of Bcl9L.
Target	BCL9L
Preservatives	Bcl9L Antibody is supplied in PBS containing 0.02% sodium azide.
Form/Appearance	Liquid
Concentration	1 mg/mL
Storage	Bcl9L antibody can be stored at 4°C for three months and -20°C, stable for up to one year. As with all antibodies care should be taken to avoid repeated freeze thaw cycles. Antibodies should not be exposed to prolonged high temperatures.
Note	For research use only
Application notes	Bcl9L antibody can be used for detection of Bcl9L by Western blot at 1 µg/mL. Antibody can also be used for immunohistochemistry starting at 5 µg/mL and immunocytochemistry starting at 10 µg/mL. For immunofluorescence start at 20 µg/mL. Antibody validated: Western Blot in human samples; Immunohistochemistry in human samples; Immunocytochemistry in human samples and Immunofluorescence in human samples. All other applications and species not yet tested.
Isotype	IgG
Clonality	Polyclonal
MW	Predicted: 165 kDa Observed: 195 kDa
Uniprot ID	Q86UU0
NCBI	NP_872363
Dilution Range	Bcl9L antibody can be used for detection of Bcl9L by Western blot at 1 µg/mL. Antibody can also be used for immunohistochemistry starting at 5 µg/mL and



Western blot analysis of Bcl9L in HeLa c...



Immunocytochemistry of Bcl9L in HeLa cel...



Immunofluorescence of Bcl9L in human bre...