
Product Datasheet

TNFRSF17 Antibody (orb1239053)

Description

TNFRSF17 Antibody

Species/Host

Rabbit

Reactivity

Human

Conjugation

Unconjugated

Tested Applications

ELISA, IF, IHC-P, WB

Immunogen

BCMA antibody was raised against a 16 amino acid synthetic peptide mapping at the carboxy terminus of human BCMA. The immunogen is located within the last 50 amino acids of BCMA.

Target

TNFRSF17

Preservatives

BCMA Antibody is supplied in PBS containing 0.02% sodium azide.

Form/Appearance

Liquid

Concentration

1 mg/mL

Storage

BCMA antibody can be stored at 4°C up to one year. Antibodies should not be exposed to prolonged high temperatures.

Note

For research use only

Application notes

BCMA antibody can be used for detection of BCMA by Western blot at 5 µg/mL. Antibody can also be used for immunohistochemistry starting at 5 µg/mL. For immunofluorescence start at 20 µg/mL. Antibody validated: Western Blot in human samples; Immunohistochemistry in human samples and Immunofluorescence in human samples. All other applications and species not yet tested.

Isotype

IgG

Clonality

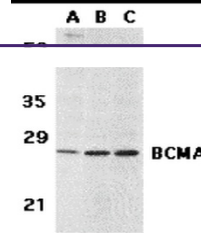
Polyclonal

MW

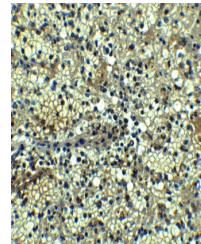
Predicted: 20 kDa Observed: 27 kDa

Uniprot ID
[Q02223](#)
NCBI
[NP_001183](#)
Dilution Range

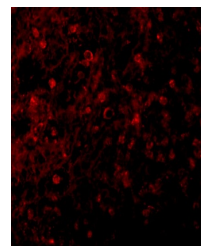
BCMA antibody can be used for detection of BCMA by Western blot at 5 µg/mL. Antibody can also be used for immunohistochemistry starting at 5 µg/mL. For immunofluorescence start at 20 µg/mL. Antibody validated: Western Blot in human samples; Immunohistochemistry in human samples and Immunofluorescence in human samples. All other



Western blot analysis of BCMA in (A) hum...



Immunohistochemistry of BCMA in human sp...



Immunofluorescence of BCMA in Human Sple...