
Product Datasheet

SARS-CoV-2 (COVID-19) Spike 156-157EF Antibody (orb1239051)

Description

SARS-CoV-2 (COVID-19) Spike 156-157EF

COVID-19 (WT) COVID-19 (Delta)

Species/Host

Rabbit

Reactivity

Virus

Conjugation

Unconjugated

Tested Applications

ELISA, IHC-P, WB

Immunogen

Anti-SARS-CoV-2 Spike 156-157EF antibody (orb1239051) was raised against a peptide corresponding to 13 amino acids near the amino terminal domain of SARS-CoV-2 Spike protein. The immunogen is located within 130-180 amino acids of SARS-CoV-2 Spike protein.

Target

S

Preservatives

SARS-CoV-2 Spike P26S antibody is supplied in PBS containing 0.02% sodium azide.

Form/Appearance

Liquid

Concentration

1 mg/mL

Storage

SARS-CoV-2 Spike 156-157EF antibody can be stored at 4°C for three months and -20°C, stable for up to one year. As with all antibodies care should be taken to avoid repeated freeze thaw cycles. Antibodies should not be exposed to prolonged high temperatures.

Note

For research use only

Isotype

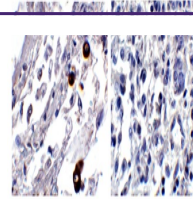
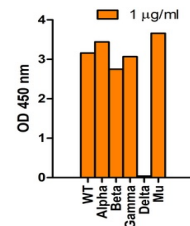
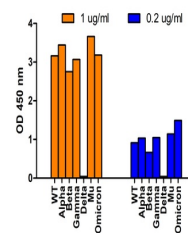
IgG

Clonality

Polyclonal

Uniprot ID
[P0DTC2](#)
NCBI
[QHD43416](#)
Dilution Range

WB: 1 µg/mL. Antibody validated: Western Blot in human samples. Anti-SARS-CoV-2 Spike 156-157EF antibody specifically does not detect SARS-CoV-2 Delta Variant (B.1.617.2) Spike S1 protein, but detects Spike S1 protein of WT and other variants by ELISA. All other applications and species not yet tested.


 Immunohistochemistry
Validation of Spike...

 SARS-Cov-2 Spike
156-157EF Antibodies
Sp...

 SARS-Cov-2 Spike
156-157EF Antibodies
Sp...