

---

## Product Datasheet

### CXCR6 Antibody (orb1239049)

**Description**

CXCR6 Antibody

**Species/Host**

Rabbit

**Reactivity**

Human

**Conjugation**

Unconjugated

**Tested**

ELISA, IF, IHC-P, WB

**Applications**
**Immunogen**

Bonzo antibody was raised against a peptide corresponding to 15 amino acids near the amino terminus of human Bonzo/STRL33. The immunogen is located within the first 50 amino acids of Bonzo.

**Target**

CXCR6

**Preservatives**

Bonzo Antibody is supplied in PBS containing 0.02% sodium azide.

**Form/Appearance**

Liquid

**Concentration**

1 mg/mL

**Storage**

Bonzo antibody can be stored at 4°C for three months and -20°C, stable for up to one year. As with all antibodies care should be taken to avoid repeated freeze thaw cycles. Antibodies should not be exposed to prolonged high temperatures.

**Note**

For research use only

**Application notes**

Bonzo antibody can be used for detection of Bonzo by Western blot at 0.5 µg/mL. Antibody can also be used for immunohistochemistry starting at 2.5 µg/mL. For immunofluorescence start at 20 µg/mL. Antibody validated: Western Blot in human samples; Immunohistochemistry in human samples and Immunofluorescence in human samples. All other applications and species not yet tested.

**Isotype**

IgG

**Clonality**

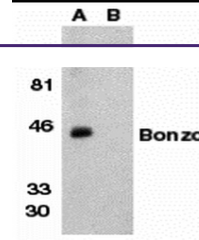
Polyclonal

**MW**

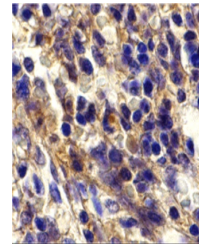
Predicted: 38 kDa Observed: 43 kDa

**Uniprot ID**
[O00574](#)
**NCBI**
[AAB64221](#)
**Dilution Range**

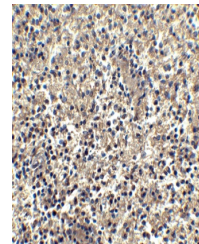
Bonzo antibody can be used for detection of Bonzo by Western blot at 0.5 µg/mL. Antibody can also be used for immunohistochemistry starting at 2.5 µg/mL. For immunofluorescence start at 20 µg/mL. Antibody validated: Western Blot in human



Western blot analysis of Bonzo in human ...



Immunohistochemistry of Bonzo in human s...



Immunohistochemistry of Bonzo in human s...