

---

## Product Datasheet

### SARS-CoV-2 (COVID-19) Spike Antibody (biotin) (orb1239045)

**Description**

SARS-CoV-2 (COVID-19) Spike Antibody

**Species/Host**

Rabbit

**Reactivity**

Virus

**Conjugation**

Biotin

**Tested Applications**

ELISA, IHC

**Immunogen**

Anti-SARS-CoV-2 (COVID-19) Spike antibody (3525) was raised against a peptide corresponding to 20 amino acids near the carboxy terminus of SARS-CoV-2 (COVID-19) Spike glycoprotein. The immunogen is located within the last 50 amino acids of SARS-CoV-2 (COVID-19) Spike protein.

**Target**

S

**Preservatives**

SARS-CoV-2 (COVID-19) Spike Antibody is supplied in PBS containing 0.02% sodium azide.

**Form/Appearance**

Liquid

**Concentration**

1 mg/mL

**Storage**

SARS-CoV-2 (COVID-19) Spike antibody can be stored at 4°C for three months and -20°C, stable for up to one year. As with all antibodies care should be taken to avoid repeated freeze thaw cycles. Antibodies should not be exposed to prolonged high temperatures.

**Note**

For research use only

**Application notes**

IHC: 1 µg/mL Antibody validated: Immunohistochemistry in COVID-19 patient samples. All other applications and species not yet tested.

**Isotype**

IgG

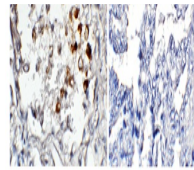
**Clonality**

Polyclonal

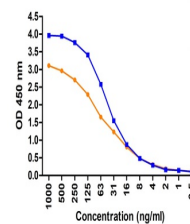
**Uniprot ID**
[P0DTC2](#)
**NCBI**
[QHD43416](#)
**Dilution Range**

IHC: 1 µg/mL Antibody validated: Immunohistochemistry in COVID-19 patient samples. All other applications and species

COVID-19 (+)      COVID-19 (-)



Immunohistochemistry Validation of SARS-...



ELISA Validation. Coating Antigen: immun...