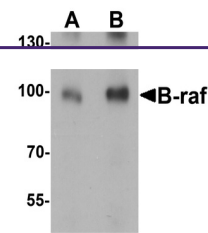


---

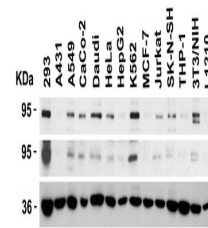
## Product Datasheet

### BRAF Antibody (orb1239042)

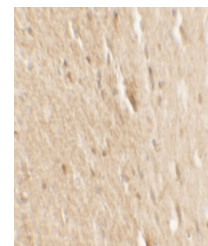
<b>Description</b>	BRAF Antibody
<b>Species/Host</b>	Rabbit
<b>Reactivity</b>	Human, Mouse
<b>Conjugation</b>	Unconjugated
<b>Tested Applications</b>	ELISA, IF, IHC-P, WB
<b>Immunogen</b>	Anti-B-raf antibody (orb1239042) was raised against a peptide corresponding to 19 amino acids near the center of human B-raf. The immunogen is located within amino acids 330 - 380 of B-raf.
<b>Target</b>	BRAF
<b>Preservatives</b>	B-raf Antibody is supplied in PBS containing 0.02% sodium azide.
<b>Form/Appearance</b>	Liquid
<b>Concentration</b>	1 mg/mL
<b>Storage</b>	B-raf antibody can be stored at 4°C for three months and -20°C, stable for up to one year.
<b>Note</b>	For research use only
<b>Isotype</b>	IgG
<b>Clonality</b>	Polyclonal
<b>MW</b>	Predicted: 94kD Observed: 94 kD
<b>Uniprot ID</b>	<a href="#">P15056</a>
<b>NCBI</b>	<a href="#">P15056</a>
<b>Dilution Range</b>	WB: 0.5-2 µg/mL; IHC: 2.5 µg/mL; IF: 20 µg/mL. Antibody validated: Western Blot in human and mouse samples; Immunohistochemistry in human samples and Immunofluorescence in human samples. All other applications and species not yet tested.
<b>Expiration Date</b>	12 months from date of receipt.



Western Blot  
Validation in Human  
Brain T...



Independent Antibody  
Validation (IAV) vi...



Immunohistochemistry  
Validation of B-raf...