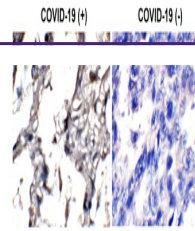
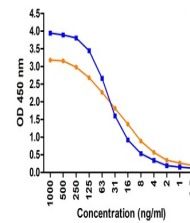

Product Datasheet

SARS-CoV-2 (COVID-19) Envelope Antibody (biotin) (orb1239041)

Description

SARS-CoV-2 (COVID-19) Envelope Antibody


 Immunohistochemistry
Validation of SARS-...

 ELISA Validation.
Coating Antigen:
immun...

Species/Host	Rabbit
Reactivity	Virus
Conjugation	Biotin
Tested Applications	ELISA, IHC
Immunogen	Anti-SARS-CoV-2 (COVID-19, 2019-nCoV) Envelope antibody (3531) was raised against a peptide corresponding to 10 amino acids near the amino terminus of SARS-CoV-2 (COVID-19, 2019-nCoV) Envelope protein. The immunogen is located within the first 50 amino acids of SARS-CoV-2 (COVID-19, 2019-nCoV) Envelope.
Target	E
Preservatives	SARS-CoV-2 (COVID-19, 2019-nCoV) Envelope Antibody is supplied in PBS containing 0.02% sodium azide.
Form/Appearance	Liquid
Concentration	1 mg/mL
Storage	SARS-CoV-2 COVID-19, 2019-nCoV) Envelope antibody can be stored at 4 ° C for three months and -20 ° C, stable for up to one year. As with all antibodies care should be taken to avoid repeated freeze thaw cycles. Antibodies should not be exposed to prolonged high temperatures.
Note	For research use only
Application notes	IHC: 2 µg/mL Antibody validated: Immunohistochemistry in COVID-19 patient samples. All other applications and species not yet tested.
Isotype	IgG
Clonality	Polyclonal
Uniprot ID	QHD43418
NCBI	QHD43418
Dilution Range	IHC: 2 µg/mL Antibody validated: Immunohistochemistry in COVID-19 patient