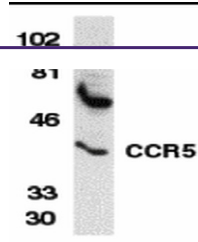
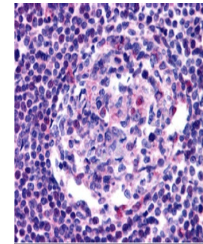

Product Datasheet

CCR5 Antibody (orb1239039)

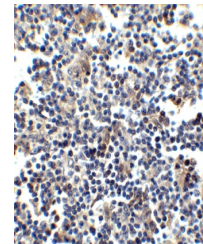
Description	CCR5 Antibody
Species/Host	Rabbit
Reactivity	Human
Conjugation	Unconjugated
Tested Applications	ELISA, IF, IHC-P, WB
Immunogen	CCR5 antibody was raised against a 15 amino acid peptide near the amino terminus of human CCR5. The immunogen is located within the first 50 amino acids of CCR5.
Target	CCR5
Preservatives	CCR5 Antibody is supplied in PBS containing 0.02% sodium azide.
Form/Appearance	Liquid
Concentration	1 mg/ml
Storage	CCR5 antibody can be stored at 4°C for three months and -20°C, stable for up to one year. As with all antibodies care should be taken to avoid repeated freeze thaw cycles. Antibodies should not be exposed to prolonged high temperatures.
Note	For research use only
Application notes	CCR5 antibody can be used for Western blot at 1 µg/mL. CCR5 antibody can also detect CCR5 by immunohistochemistry at 2.5 µg/mL. Antibody validated: Western Blot in human samples; Immunohistochemistry in human samples and Immunofluorescence in human samples. All other applications and species not yet tested.
Isotype	IgG
Clonality	Polyclonal
MW	Predicted: 39 kDa Observed: 40 kDa
Uniprot ID	P51681
NCBI	AAB57793
Dilution Range	CCR5 antibody can be used for Western blot at 1 µg/mL. CCR5 antibody can also detect CCR5 by immunohistochemistry at 2.5 µg/mL. Antibody validated: Western Blot in human samples; Immunohistochemistry in human samples and Immunofluorescence in human samples. All other



Western blot analysis of CCR5 in THP-1 w...



Immunohistochemistry of CCR5 in human ly...



Immunohistochemistry of CCR5 in human ly...