
Product Datasheet

CLDN4 Antibody (orb1239033)

Description

CLDN4 Antibody

Species/Host

Rabbit

Reactivity

Human

Conjugation

Unconjugated

Tested Applications

ELISA, IF, WB

Immunogen

Anti-CLAUDIN4 antibody (orb1239033) was raised against a peptide corresponding to 17 amino acids near the carboxy terminus of human CLAUDIN4. The immunogen is located within the last 50 amino acids of CLAUDIN4.

Target

CLDN4

Preservatives

CLAUDIN4 Antibody is supplied in PBS containing 0.02% sodium azide.

Form/Appearance

Liquid

Concentration

1 mg/mL

Storage

CLAUDIN4 antibody can be stored at 4°C for three months and -20°C, stable for up to one year. As with all antibodies care should be taken to avoid repeated freeze thaw cycles. Antibodies should not be exposed to prolonged high temperatures.

Note

For research use only

Isotype

IgG

Clonality

Polyclonal

MW

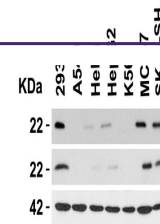
Predicted: 22kD Observed: 22 kD

Uniprot ID
[O14493](#)
NCBI
[NP_001296](#)
Dilution Range

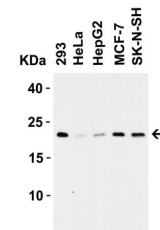
WB: 0.5-2 µg/mL; IF: 20 µg/mL. Antibody validated: Western Blot in human samples; Immunofluorescence in human samples. All other applications and species not yet tested.

Expiration Date

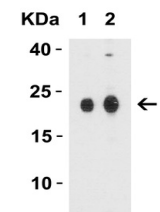
12 months from date of receipt.



Independent Antibody Validation (IAV) vi...



Western Blot Validation in Human Cell Li...



Western Blot Validation in Human Colon T...