
Product Datasheet

DCLK3 Antibody (orb1239030)

Description

DCLK3 Antibody

Species/Host

Rabbit

Reactivity

Human, Mouse

Conjugation

Unconjugated

Tested Applications

ELISA, IF, IHC-P, WB

Immunogen

DCLK3 antibody was raised against a 14 amino acid synthetic peptide near the amino terminus of human DCLK3. The immunogen is located within the last 50 amino acids of DCLK3.

Target

DCLK3

Preservatives

DCLK3 Antibody is supplied in PBS containing 0.02% sodium azide.

Form/Appearance

Liquid

Concentration

1 mg/mL

Storage

DCLK3 antibody can be stored at 4°C for three months and -20°C, stable for up to one year. As with all antibodies care should be taken to avoid repeated freeze thaw cycles. Antibodies should not be exposed to prolonged high temperatures.

Note

For research use only

Application notes

DCLK3 antibody can be used for detection of DCLK3 by Western blot at 1 - 2 µg/mL. Antibody can also be used for immunohistochemistry starting at 5 µg/mL. For immunofluorescence start at 20 µg/mL. Antibody validated: Western Blot in human samples; Immunohistochemistry in mouse samples and Immunofluorescence in human and mouse samples. All other applications and species not yet tested.

Isotype

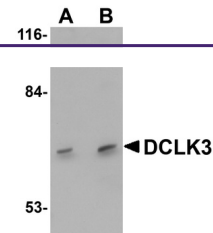
IgG

Clonality

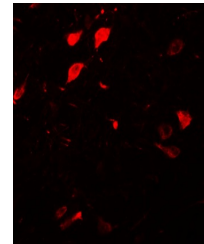
Polyclonal

Uniprot ID
[Q9C098](#)
NCBI
[NP_208382](#)
Dilution Range

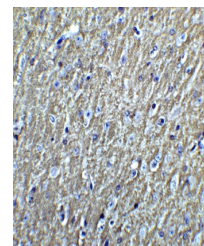
DCLK3 antibody can be used for detection of DCLK3 by Western blot at 1 - 2 µg/mL. Antibody can also be used for immunohistochemistry starting at 5 µg/mL. For immunofluorescence start at 20 µg/mL. Antibody validated: Western Blot in human samples; Immunohistochemistry in mouse samples and



Western blot analysis of DCLK3 in K562 c...



Immunofluorescence of DLCK3 in human bra...



Immunohistochemistry of DCLK3 in mouse b...