

---

## Product Datasheet

### Dffb Antibody (orb1239028)

**Description**

Dffb Antibody

**Species/Host**

Rabbit

**Reactivity**

Human, Mouse, Rat

**Conjugation**

Unconjugated

**Tested**

ELISA, ICC, IF, WB

**Applications**
**Immunogen**

DFF40 antibody was raised against a peptide corresponding to 18 amino acids near the center of murine CAD. The immunogen is located within amino acids 130 - 180 of DFF40.

**Target**

Dffb

**Preservatives**

DFF40 Antibody is supplied in PBS containing 0.02% sodium azide.

**Form/Appearance**

Liquid

**Concentration**

1 mg/mL

**Storage**

DFF40 antibody can be stored at 4°C for three months and -20°C, stable for up to one year. As with all antibodies care should be taken to avoid repeated freeze thaw cycles. Antibodies should not be exposed to prolonged high temperatures.

**Note**

For research use only

**Application notes**

DFF40 antibody can be used for detection of DFF40 by Western blot 0.5 µg/mL. A 40 kDa band can be detected. Antibody can also be used for immunocytochemistry starting at 5 µg/mL. For immunofluorescence start at 20 µg/mL. Antibody validated: Western Blot in human samples; Immunocytochemistry in human samples and Immunofluorescence in human samples. All other applications and species not yet tested.

**Isotype**

IgG

**Clonality**

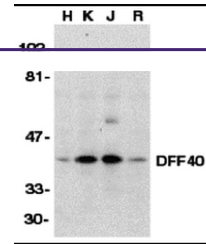
Polyclonal

**MW**

Predicted: 38 kDa Observed: 40 kDa

**Uniprot ID**
[O54788](#)
**NCBI**
[NP\\_031885](#)
**Dilution Range**

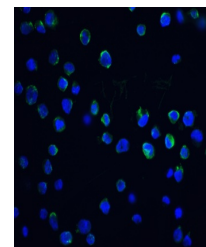
DFF40 antibody can be used for detection of DFF40 by Western blot 0.5 µg/mL. A 40 kDa band can be detected. Antibody can also be used for immunocytochemistry starting at 5 µg/mL. For



Western blot analysis of DFF40 in HeLa (...



Immunocytochemistry of DFF40 in Jurkat c...



Immunofluorescence of DFF40 in K562 cell...