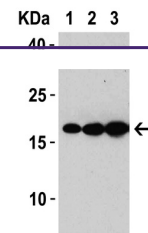
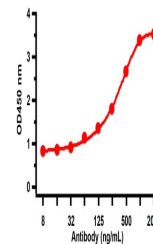

Product Datasheet

SARS-CoV Matrix Antibody (orb1239027)

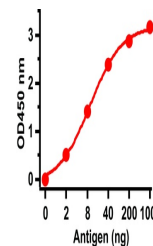
Description	SARS-CoV Matrix Antibody
Species/Host	Rabbit
Reactivity	Virus
Conjugation	Unconjugated
Tested Applications	ELISA, WB
Immunogen	Anti-SARS-CoV-2/SARS-CoV Matrix antibody (orb1239027) was raised against a peptide corresponding to 15 amino acids near the carboxy-terminus of SARS-CoV Matrix protein. The immunogen is located within the last 50 amino acids of SARS-CoV Matrix.
Target	M
Preservatives	SARS-CoV-2/SARS-CoV Matrix Antibody is supplied in PBS containing 0.02% sodium azide.
Form/Appearance	Liquid
Concentration	1 mg/mL
Storage	SARS-CoV-2/SARS-CoV Matrix antibody can be stored at 4°C for three months and -20°C, stable for up to one year. As with all antibodies care should be taken to avoid repeated freeze thaw cycles. Antibodies should not be exposed to prolonged high temperatures.
Note	For research use only
Isotype	IgG
Clonality	Polyclonal
Uniprot ID	O62114
NCBI	QH062114.1
Dilution Range	WB: 1 µg/mL. Antibody validated: SARS-CoV-2/SARS-CoV Matrix antibody can be used for the detection of SARS-CoV-2/SARS-CoV Matrix protein in ELISA. It will detect 5 ng of free peptide at 1 µg/mL.
Expiration Date	12 months from date of receipt.



Western Blot Validation with SARS-CoV-2 ...



ELISA Test. Antibodies: SARS-CoV-2/SARS-...



ELISA Test. Antibodies: SARS-CoV-2/SARS-...