
Product Datasheet

SATB1 Antibody (orb1239022)

Description

SATB1 Antibody

Species/Host

Rabbit

Reactivity

Human, Mouse, Rat

Conjugation

Unconjugated

Tested Applications

ELISA, IF, IHC-P, WB

Immunogen

SATB1 antibody was raised against a 15 amino acid synthetic peptide near the carboxy terminus of the human SATB1. The immunogen is located within amino acids 620 - 670 of SATB1.

Target

SATB1

Preservatives

SATB1 Antibody is supplied in PBS containing 0.02% sodium azide.

Form/Appearance

Liquid

Concentration

1 mg/mL

Storage

SATB1 antibody can be stored at 4°C for three months and -20°C, stable for up to one year. As with all antibodies care should be taken to avoid repeated freeze thaw cycles. Antibodies should not be exposed to prolonged high temperatures.

Note

For research use only

Application notes

SATB1 antibody can be used for detection of SATB1 by Western blot at 2 - 4 µg/mL. Antibody can also be used for immunohistochemistry starting at 5 µg/mL. For immunofluorescence start at 20 µg/mL. Antibody validated: Western Blot in mouse samples; Immunohistochemistry in human samples and Immunofluorescence in human samples. All other applications and species not yet tested.

Isotype

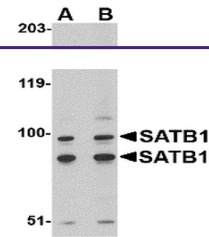
IgG

Clonality

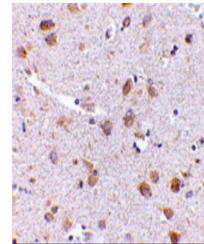
Polyclonal

Uniprot ID
[Q01826](#)
NCBI
[Q01826](#)
Dilution Range

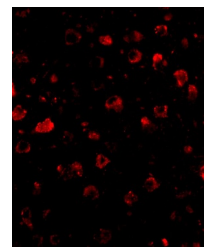
SATB1 antibody can be used for detection of SATB1 by Western blot at 2 - 4 µg/mL. Antibody can also be used for immunohistochemistry starting at 5 µg/mL. For immunofluorescence start at 20 µg/mL. Antibody validated: Western Blot in mouse samples; Immunohistochemistry in human samples and



Western blot analysis of SATB1 in A20 ce...



Immunohistochemistry of SATB1 in human b...



Immunofluorescence of SATB1 in Human Bra...