

---

## Product Datasheet

### SCAMP4 Antibody (orb1239018)

**Description**

SCAMP4 Antibody

**Species/Host**

Rabbit

**Reactivity**

Human, Mouse, Rat

**Conjugation**

Unconjugated

**Tested**

ELISA, IF, IHC-P, WB

**Applications**
**Immunogen**

SCAMP4 antibody was raised against a 15 amino acid synthetic peptide near the carboxy terminus of human SCAMP4. The immunogen is located within the last 50 amino acids of SCAMP4.

**Target**

SCAMP4

**Preservatives**

SCAMP4 Antibody is supplied in PBS containing 0.02% sodium azide.

**Form/Appearance**

Liquid

**Concentration**

1 mg/mL

**Storage**

SCAMP4 antibody can be stored at 4°C for three months and -20°C, stable for up to one year. As with all antibodies care should be taken to avoid repeated freeze thaw cycles. Antibodies should not be exposed to prolonged high temperatures.

**Note**

For research use only

**Application notes**

SCAMP4 antibody can be used for detection of SCAMP4 by Western blot at 1 - 2 µg/mL. Antibody can also be used for immunohistochemistry starting at 2.5 µg/mL. For immunofluorescence start at 20 µg/mL. Antibody validated: Western Blot in mouse samples; Immunohistochemistry in human samples and Immunofluorescence in human samples. All other applications and species not yet tested.

**Isotype**

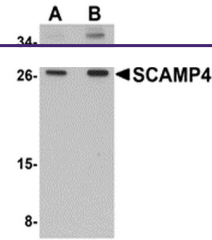
IgG

**Clonality**

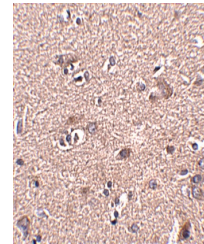
Polyclonal

**Uniprot ID**
[Q969E2](#)
**NCBI**
[NP\\_524558](#)
**Dilution Range**

SCAMP4 antibody can be used for detection of SCAMP4 by Western blot at 1 - 2 µg/mL. Antibody can also be used for immunohistochemistry starting at 2.5 µg/mL. For immunofluorescence start at 20 µg/mL. Antibody validated: Western Blot in mouse samples; Immunohistochemistry in human samples

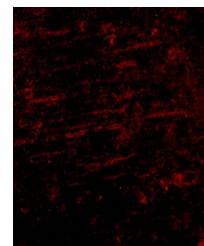


Western blot analysis of SCAMP4 in 3T3 c...



Immunohistochemistry of SCAMP4 in human

...



Immunofluorescence of SCAMP4 in Human Br...