

---

## Product Datasheet

### SCARA5 Antibody (orb1239017)

**Description**

SCARA5 Antibody

**Species/Host**

Rabbit

**Reactivity**

Human

**Conjugation**

Unconjugated

**Tested**

ELISA, ICC, IF, WB

**Applications**
**Immunogen**

SCARA5 antibody was raised against a 17 amino acid synthetic peptide near the carboxy terminus of human SCARA5. The immunogen is located within amino acids 350 - 400 of SCARA5.

**Target**

SCARA5

**Preservatives**

SCARA5 Antibody is supplied in PBS containing 0.02% sodium azide.

**Form/Appearance**

Liquid

**Concentration**

1 mg/mL

**Storage**

SCARA5 antibody can be stored at 4°C for three months and -20°C, stable for up to one year. As with all antibodies care should be taken to avoid repeated freeze thaw cycles. Antibodies should not be exposed to prolonged high temperatures.

**Note**

For research use only

**Application notes**

SCARA5 antibody can be used for detection of SCARA5 by Western blot at 1 µg/mL. Antibody can also be used for immunocytochemistry starting at 2.5 µg/mL. For immunofluorescence start at 20 µg/mL. Antibody validated: Western Blot in human samples; Immunocytochemistry in human samples and Immunofluorescence in human samples. All other applications and species not yet tested.

**Isotype**

IgG

**Clonality**

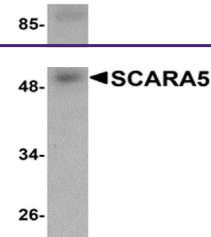
Polyclonal

**MW**

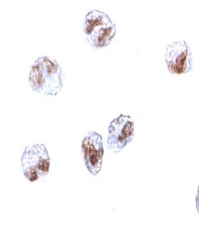
Predicted: 24, 39, 44, 54 kDa Observed: 50 kDa

**Uniprot ID**
[Q6ZMJ2](#)
**NCBI**
[NP\\_776194](#)
**Dilution Range**

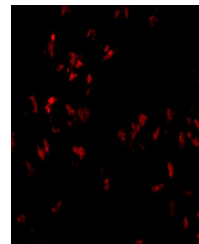
SCARA5 antibody can be used for detection of SCARA5 by Western blot at 1 µg/mL. Antibody can also be used for immunocytochemistry starting at 2.5 µg/mL. For immunofluorescence start at 20 µg/mL. Antibody validated: Western Blot in human



Western blot analysis of SCARA5 in human...



Immunocytochemistry of SCARA5 in HepG2 C...



Immunofluorescence of SCARA5 in HepG2 ce...