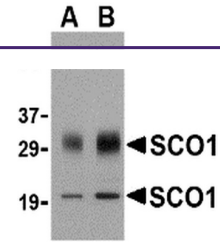


---

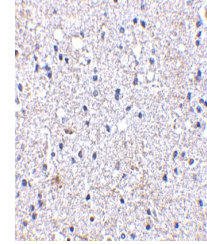
## Product Datasheet

### SCO1 Antibody (orb1239014)

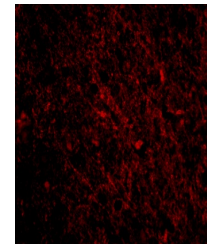
Description	SCO1 Antibody
<b>Species/Host</b>	Rabbit
<b>Reactivity</b>	Human, Mouse, Rat
<b>Conjugation</b>	Unconjugated
<b>Tested Applications</b>	ELISA, IF, IHC-P, WB
<b>Immunogen</b>	SCO1 antibody was raised against a 14 amino acid synthetic peptide from near the center of human SCO1. The immunogen is located within amino acids 100 - 150 of SCO1.
<b>Target</b>	SCO1
<b>Preservatives</b>	SCO1 Antibody is supplied in PBS containing 0.02% sodium azide.
<b>Form/Appearance</b>	Liquid
<b>Concentration</b>	1 mg/mL
<b>Storage</b>	SCO1 antibody can be stored at 4°C for three months and -20°C, stable for up to one year. As with all antibodies care should be taken to avoid repeated freeze thaw cycles. Antibodies should not be exposed to prolonged high temperatures.
<b>Note</b>	For research use only
<b>Application notes</b>	SCO1 antibody can be used for detection of SCO1 by Western blot at 0.5 - 1 µg/mL. Antibody can also be used for immunohistochemistry starting at 2.5 µg/mL. For immunofluorescence start at 20 µg/mL. Antibody validated: Western Blot in human samples; Immunohistochemistry in human samples and Immunofluorescence in human samples. All other applications and species not yet tested.
<b>Isotype</b>	IgG
<b>Clonality</b>	Polyclonal
<b>Uniprot ID</b>	<a href="#">O75880</a>
<b>NCBI</b>	<a href="#">O75880</a>
<b>Dilution Range</b>	SCO1 antibody can be used for detection of SCO1 by Western blot at 0.5 - 1 µg/mL. Antibody can also be used for immunohistochemistry starting at 2.5 µg/mL. For immunofluorescence start at 20 µg/mL. Antibody validated: Western Blot in human samples; Immunohistochemistry in human samples



Western blot analysis of SCO1 in human b...



Immunohistochemistry of SCO1 in human br...



Immunofluorescence of SCO1 in Human Brai...