
Product Datasheet

SCO2 Antibody (orb1239013)

Description

SCO2 Antibody

Species/Host

Rabbit

Reactivity

Human

Conjugation

Unconjugated

Tested

ELISA, IF, IHC-P, WB

Applications
Immunogen

SCO2 antibody was raised against a 19 amino acid synthetic peptide from near the carboxy terminus of human SCO2. The immunogen is located within the last 50 amino acids of SCO2.

Target

SCO2

Preservatives

SCO2 Antibody is supplied in PBS containing 0.02% sodium azide.

Form/Appearance

Liquid

Concentration

1 mg/mL

Storage

SCO2 antibody can be stored at 4°C for three months and -20°C, stable for up to one year. As with all antibodies care should be taken to avoid repeated freeze thaw cycles. Antibodies should not be exposed to prolonged high temperatures.

Note

For research use only

Application notes

SCO2 antibody can be used for detection of SCO2 by Western blot at 0.5 - 2 µg/mL. Antibody can also be used for immunohistochemistry starting at 2.5 µg/mL. For immunofluorescence start at 20 µg/mL. Antibody validated: Western Blot in human samples; Immunohistochemistry in human samples and Immunofluorescence in human samples. All other applications and species not yet tested.

Isotype

IgG

Clonality

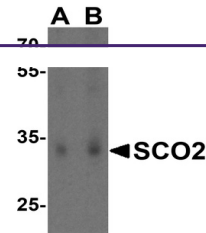
Polyclonal

MW

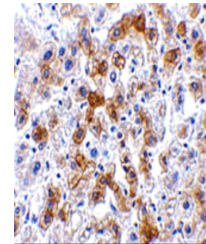
Predicted: 29 kDa Observed: 33 kDa

Uniprot ID
[O43819](#)
NCBI
[O43819](#)
Dilution Range

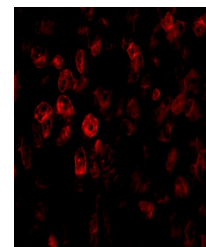
SCO2 antibody can be used for detection of SCO2 by Western blot at 0.5 - 2 µg/mL. Antibody can also be used for immunohistochemistry starting at 2.5 µg/mL. For immunofluorescence start at 20 µg/mL. Antibody validated: Western Blot in human



Western blot analysis of SCO2 in HL60 ce...



Immunohistochemistry of SCO2 in human li...



Immunofluorescence of SCO2 in Human Live...