
Product Datasheet

FBXL20 Antibody (orb1239012)

Description

FBXL20 Antibody

Species/Host

Rabbit

Reactivity

Human, Mouse, Rat

Conjugation

Unconjugated

Tested Applications

ELISA, IHC-P, WB

Immunogen

SCRAPPER antibody was raised against a 18 amino acid synthetic peptide near the carboxy terminus of the human SCRAPPER. The immunogen is located within the last 50 amino acids of SCRAPPER.

Target

FBXL20

Preservatives

SCRAPPER Antibody is supplied in PBS containing 0.02% sodium azide.

Form/Appearance

Liquid

Concentration

1 mg/mL

Storage

SCRAPPER antibody can be stored at 4°C for three months and -20°C, stable for up to one year. As with all antibodies care should be taken to avoid repeated freeze thaw cycles. Antibodies should not be exposed to prolonged high temperatures.

Note

For research use only

Application notes

SCRAPPER antibody can be used for detection of SCRAPPER by Western blot at 0.5 - 1 µg/mL. Antibody can also be used for immunohistochemistry starting at 2.5 µg/mL. Antibody validated: Western Blot in mouse samples and Immunohistochemistry in human samples. All other applications and species not yet tested.

Isotype

IgG

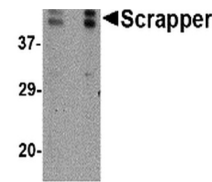
Clonality

Polyclonal

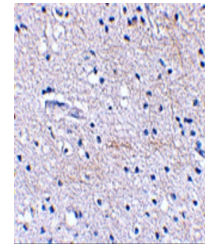
Uniprot ID
[Q96IG2](#)
NCBI
[NP_116264](#)
Dilution Range

SCRAPPER antibody can be used for detection of SCRAPPER by Western blot at 0.5 - 1 µg/mL. Antibody can also be used for immunohistochemistry starting at 2.5 µg/mL. Antibody validated: Western Blot in mouse samples and Immunohistochemistry in human samples. All other applications and species not yet tested.

A B



Western blot analysis of SCRAPPER in A20...



Immunohistochemical staining of human br...