
Product Datasheet

FBXL20 Antibody (orb1239011)

Description

FBXL20 Antibody

Species/Host

Rabbit

Reactivity

Human, Mouse, Rat

Conjugation

Unconjugated

Tested Applications

ELISA, IF, IHC-P, WB

Immunogen

SCRAPPER antibody was raised against a 18 amino acid synthetic peptide near the amino terminus of the human SCRAPPER. The immunogen is located within the first 50 amino acids of SCRAPPER.

Target

FBXL20

Preservatives

SCRAPPER Antibody is supplied in PBS containing 0.02% sodium azide.

Form/Appearance

Liquid

Concentration

1 mg/mL

Storage

SCRAPPER antibody can be stored at 4°C for three months and -20°C, stable for up to one year. As with all antibodies care should be taken to avoid repeated freeze thaw cycles. Antibodies should not be exposed to prolonged high temperatures.

Note

For research use only

Application notes

SCRAPPER antibody can be used for detection of SCRAPPER by Western blot at 0.5 - 1 µg/mL. Antibody can also be used for immunohistochemistry starting at 2.5 µg/mL. For immunofluorescence start at 20 µg/mL. Antibody validated: Western Blot in mouse samples; Immunohistochemistry in human samples and Immunofluorescence in human samples. All other applications and species not yet tested.

Isotype

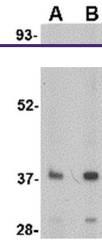
IgG

Clonality

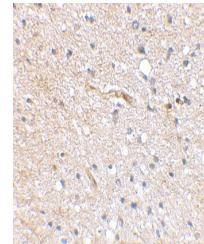
Polyclonal

Uniprot ID
[Q96IG2](#)
NCBI
[NP_116264](#)
Dilution Range

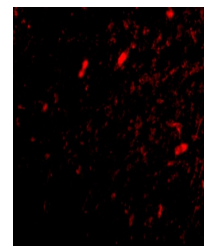
SCRAPPER antibody can be used for detection of SCRAPPER by Western blot at 0.5 - 1 µg/mL. Antibody can also be used for immunohistochemistry starting at 2.5 µg/mL. For immunofluorescence start at 20 µg/mL. Antibody validated: Western Blot in mouse samples; Immunohistochemistry in human samples



Western blot analysis of SCRAPPER in A20...



Immunohistochemical staining of human br...



Immunofluorescence of scrapper in human ...