
Product Datasheet

SCRN1 Antibody (orb1239010)

Description

SCRNI Antibody

Species/Host

Rabbit

Reactivity

Human, Mouse, Rat

Conjugation

Unconjugated

Tested Applications

ELISA, IF, IHC-P, WB

Immunogen

SCRNI antibody was raised against a 20 amino acid synthetic peptide near the carboxy terminus of human SCRNI. The immunogen is located within amino acids 320 - 370 of SCRNI.

Target

SCRNI

Preservatives

SCRNI Antibody is supplied in PBS containing 0.02% sodium azide.

Form/Appearance

Liquid

Concentration

1 mg/mL

Storage

SCRNI antibody can be stored at 4°C for three months and -20°C, stable for up to one year. As with all antibodies care should be taken to avoid repeated freeze thaw cycles. Antibodies should not be exposed to prolonged high temperatures.

Note

For research use only

Application notes

SCRNI antibody can be used for detection of SCRNI by Western blot at 1 µg/mL. Antibody can also be used for immunohistochemistry starting at 5 µg/mL. For immunofluorescence start at 20 µg/mL. Antibody validated: Western Blot in human samples; Immunohistochemistry in human samples and Immunofluorescence in human samples. All other applications and species not yet tested.

Isotype

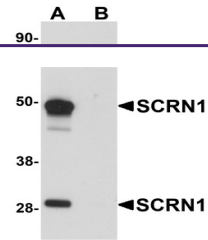
IgG

Clonality

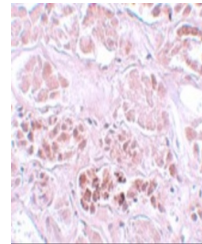
Polyclonal

Uniprot ID
[Q12765](#)
NCBI
[NP_001138985](#)
Dilution Range

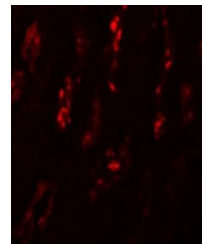
SCRNI antibody can be used for detection of SCRNI by Western blot at 1 µg/mL. Antibody can also be used for immunohistochemistry starting at 5 µg/mL. For immunofluorescence start at 20 µg/mL. Antibody validated: Western Blot in human samples; Immunohistochemistry in human samples and



Western blot analysis of SCRNI in human ...



Immunohistochemistry of SCRNI in human k...



Immunofluorescence of SCRNI in Human Kid...