
Product Datasheet

SCRN2 Antibody (orb1239009)

Description

SCR2 Antibody

Species/Host

Rabbit

Reactivity

Human, Mouse, Rat

Conjugation

Unconjugated

Tested Applications

ELISA, ICC, IF, WB

Immunogen

SCR2 antibody was raised against an 18 amino acid synthetic peptide near the carboxy terminus of human SCR2. The immunogen is located within amino acids 320 - 370 of SCR2.

Target

SCR2

Preservatives

SCR2 Antibody is supplied in PBS containing 0.02% sodium azide.

Form/Appearance

Liquid

Concentration

1 mg/mL

Storage

SCR2 antibody can be stored at 4°C for three months and -20°C, stable for up to one year. As with all antibodies care should be taken to avoid repeated freeze thaw cycles. Antibodies should not be exposed to prolonged high temperatures.

Note

For research use only

Application notes

SCR2 antibody can be used for detection of SCR2 by Western blot at 0.5 - 1 µg/mL. Antibody can also be used for immunocytochemistry starting at 20 µg/mL. For immunofluorescence start at 20 µg/mL. Antibody validated: Western Blot in human samples; Immunocytochemistry in human samples and Immunofluorescence in human samples. All other applications and species not yet tested.

Isotype

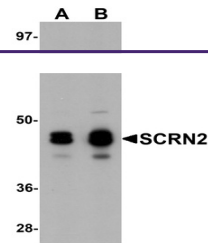
IgG

Clonality

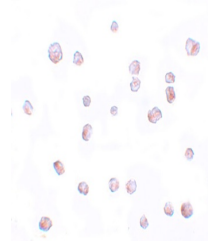
Polyclonal

Uniprot ID
[Q96FV2](#)
NCBI
[EAW94970](#)
Dilution Range

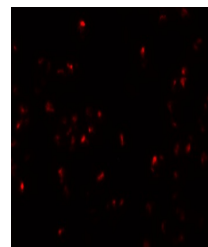
SCR2 antibody can be used for detection of SCR2 by Western blot at 0.5 - 1 µg/mL. Antibody can also be used for immunocytochemistry starting at 20 µg/mL. For immunofluorescence start at 20 µg/mL. Antibody validated: Western Blot in human samples; Immunocytochemistry in human samples



Western blot analysis of SCR2 in 293 ce...



Immunocytochemistry of SCR2 in 293 cell...



Immunofluorescence of SCR2 in 293 cells...