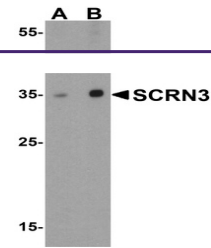
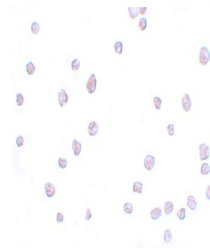

Product Datasheet

SCRN3 Antibody (orb1239008)

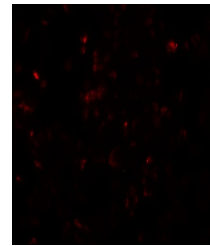
Description	SCRN3 Antibody
Species/Host	Rabbit
Reactivity	Human, Mouse
Conjugation	Unconjugated
Tested Applications	ELISA, ICC, IF, WB
Immunogen	SCRN3 antibody was raised against a 15 amino acid synthetic peptide near the center of human SCR3. The immunogen is located within amino acids 230 - 280 of SCR3.
Target	SCR3
Preservatives	SCR3 Antibody is supplied in PBS containing 0.02% sodium azide.
Form/Appearance	Liquid
Concentration	1 mg/mL
Storage	SCR3 antibody can be stored at 4°C for three months and -20°C, stable for up to one year. As with all antibodies care should be taken to avoid repeated freeze thaw cycles. Antibodies should not be exposed to prolonged high temperatures.
Note	For research use only
Application notes	SCR3 antibody can be used for detection of SCR3 by Western blot at 1 - 2 µg/mL. Antibody can also be used for immunocytochemistry starting at 20 µg/mL. For immunofluorescence start at 20 µg/mL. Antibody validated: Western Blot in human samples; Immunocytochemistry in human samples and Immunofluorescence in human samples. All other applications and species not yet tested.
Isotype	IgG
Clonality	Polyclonal
Uniprot ID	Q0VDG4
NCBI	AAI19685
Dilution Range	SCR3 antibody can be used for detection of SCR3 by Western blot at 1 - 2 µg/mL. Antibody can also be used for immunocytochemistry starting at 20 µg/mL. For immunofluorescence start at 20 µg/mL. Antibody validated: Western Blot in human samples; Immunocytochemistry in human samples and



Western blot analysis of SCR3 in human ...



Immunocytochemistry of SCR3 in 293 cell...



Immunofluorescence of SCR3 in 293 cells...