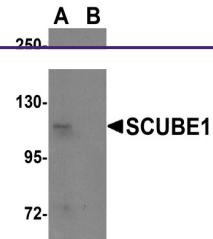


---

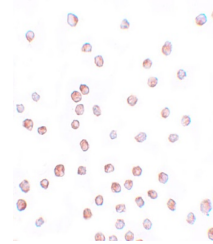
## Product Datasheet

### SCUBE1 Antibody (orb1239007)

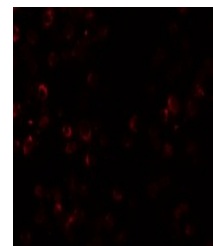
|                            |                                                                                                                                                                                                                                                                                                                                                                                       |
|----------------------------|---------------------------------------------------------------------------------------------------------------------------------------------------------------------------------------------------------------------------------------------------------------------------------------------------------------------------------------------------------------------------------------|
| <b>Description</b>         | SCUBE1 Antibody                                                                                                                                                                                                                                                                                                                                                                       |
| <b>Species/Host</b>        | Rabbit                                                                                                                                                                                                                                                                                                                                                                                |
| <b>Reactivity</b>          | Human                                                                                                                                                                                                                                                                                                                                                                                 |
| <b>Conjugation</b>         | Unconjugated                                                                                                                                                                                                                                                                                                                                                                          |
| <b>Tested Applications</b> | ELISA, ICC, IF, WB                                                                                                                                                                                                                                                                                                                                                                    |
| <b>Immunogen</b>           | SCUBE1 antibody was raised against a 14 amino acid synthetic peptide near the center of human SCUBE1. The immunogen is located within amino acids 460 - 510 of SCUBE1.                                                                                                                                                                                                                |
| <b>Target</b>              | SCUBE1                                                                                                                                                                                                                                                                                                                                                                                |
| <b>Preservatives</b>       | SCUBE1 Antibody is supplied in PBS containing 0.02% sodium azide.                                                                                                                                                                                                                                                                                                                     |
| <b>Form/Appearance</b>     | Liquid                                                                                                                                                                                                                                                                                                                                                                                |
| <b>Concentration</b>       | 1 mg/mL                                                                                                                                                                                                                                                                                                                                                                               |
| <b>Storage</b>             | SCUBE1 antibody can be stored at 4°C for three months and -20°C, stable for up to one year. As with all antibodies care should be taken to avoid repeated freeze thaw cycles. Antibodies should not be exposed to prolonged high temperatures.                                                                                                                                        |
| <b>Note</b>                | For research use only                                                                                                                                                                                                                                                                                                                                                                 |
| <b>Application notes</b>   | SCUBE1 antibody can be used for detection of SCUBE1 by Western blot at 1 µg/mL. Antibody can also be used for immunocytochemistry starting at 20 µg/mL. For immunofluorescence start at 20 µg/mL. Antibody validated: Western Blot in human samples; Immunocytochemistry in human samples and Immunofluorescence in human samples. All other applications and species not yet tested. |
| <b>Isotype</b>             | IgG                                                                                                                                                                                                                                                                                                                                                                                   |
| <b>Clonality</b>           | Polyclonal                                                                                                                                                                                                                                                                                                                                                                            |
| <b>Uniprot ID</b>          | <a href="#">Q8IWY4</a>                                                                                                                                                                                                                                                                                                                                                                |
| <b>NCBI</b>                | <a href="#">NP_766638</a>                                                                                                                                                                                                                                                                                                                                                             |
| <b>Dilution Range</b>      | SCUBE1 antibody can be used for detection of SCUBE1 by Western blot at 1 µg/mL. Antibody can also be used for immunocytochemistry starting at 20 µg/mL. For immunofluorescence start at 20 µg/mL. Antibody validated: Western Blot in human samples; Immunocytochemistry in human samples                                                                                             |



Western blot analysis of SCUBE1 in Daudi...



Immunocytochemistry of SCUBE1 in Daudi C...



Immunofluorescence of SCUBE1 in Daudi ce...