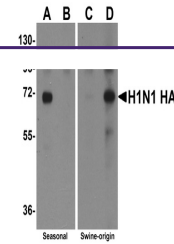


---

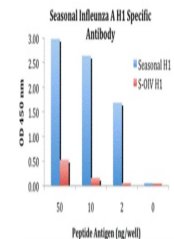
## Product Datasheet

### HA Antibody (orb1239001)

<b>Description</b>	HA Antibody
<b>Species/Host</b>	Rabbit
<b>Reactivity</b>	Virus
<b>Conjugation</b>	Unconjugated
<b>Tested Applications</b>	ELISA, WB
<b>Immunogen</b>	Hemagglutinin antibody was raised against a synthetic peptide from the Hemagglutinin protein. The peptide sequence is unique from the peptide sequence for product 5235 and 5239. This antibody is a cognate pair with product 5233. The immunogen is located within amino acids 120 - 170 of Seasonal H1N1 Hemagglutinin.
<b>Target</b>	HA
<b>Preservatives</b>	Seasonal H1N1 Hemagglutinin Antibody is supplied in PBS containing 0.02% sodium azide.
<b>Form/Appearance</b>	Liquid
<b>Concentration</b>	1 mg/mL
<b>Storage</b>	Seasonal H1N1 Hemagglutinin antibody can be stored at 4°C for three months and -20°C, stable for up to one year. As with all antibodies care should be taken to avoid repeated freeze thaw cycles. Antibodies should not be exposed to prolonged high temperatures.
<b>Note</b>	For research use only
<b>Application notes</b>	Hemagglutinin antibody can be used for the detection of the Hemagglutinin protein from the H1N1 strain of common influenza A in ELISA. It will detect 2 ng of free peptide at 1 µg/mL.
<b>Isotype</b>	IgG
<b>Clonality</b>	Polyclonal
<b>Uniprot ID</b>	<a href="#">B0VX44</a>
<b>NCBI</b>	<a href="#">ACA28844</a>
<b>Dilution Range</b>	Hemagglutinin antibody can be used for the detection of the Hemagglutinin protein from the H1N1 strain of common influenza A in ELISA. It will detect 2 ng of free peptide at 1 µg/mL.
<b>Expiration Date</b>	12 months from date of receipt.



Western blot analysis of Hemagglutinin us...



ELISA results using Seasonal H1N1 Hemagglutinin...