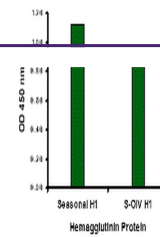
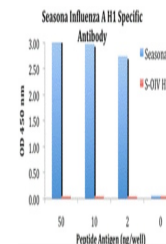

Product Datasheet

HA Antibody (orb1239000)

Description	HA Antibody
Species/Host	Rabbit
Reactivity	Virus
Conjugation	Unconjugated
Tested Applications	ELISA
Immunogen	Hemagglutinin antibody was raised against a synthetic peptide from the Hemagglutinin protein. The peptide sequence is unique from the peptide sequence for product 5231, and 5235. This antibody is a cognate pair with product number 5241. The immunogen is located within amino acids 150 - 200 of Seasonal H1N1 Hemagglutinin.
Target	HA
Preservatives	Seasonal H1N1 Hemagglutinin Antibody is supplied in PBS containing 0.02% sodium azide.
Form/Appearance	Liquid
Concentration	1 mg/mL
Storage	Seasonal H1N1 Hemagglutinin antibody can be stored at 4°C for three months and -20°C, stable for up to one year. As with all antibodies care should be taken to avoid repeated freeze thaw cycles. Antibodies should not be exposed to prolonged high temperatures.
Note	For research use only
Application notes	Hemagglutinin antibody can be used for the detection of the Hemagglutinin protein from the H1N1 strain of common influenza A in ELISA. It will detect 2 ng of free peptide at 1 µg/mL.
Isotype	IgG
Clonality	Polyclonal
Uniprot ID	B0VX44
NCBI	ACA28844
Dilution Range	Hemagglutinin antibody can be used for the detection of the Hemagglutinin protein from the H1N1 strain of common influenza A in ELISA. It will detect 2 ng of free peptide at 1 µg/mL.
Expiration Date	12 months from date of receipt.



Seasonal Influenza A Hemagglutinin antib...



ELISA results using Seasonal H1N1 Hemagg...