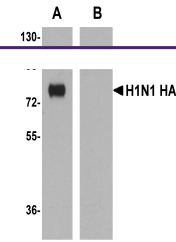
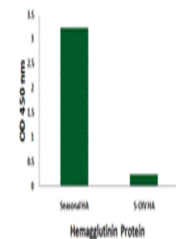

Product Datasheet

HA Antibody (orb1238999)

| Description | HA Antibody |
|----------------------------|---|
| Species/Host | Mouse |
| Reactivity | Virus |
| Conjugation | Unconjugated |
| Tested Applications | ELISA, WB |
| Immunogen | Mouse monoclonal Hemagglutinin antibody was raised against a synthetic peptide from the Hemagglutinin protein. |
| Target | HA |
| Preservatives | Seasonal H1N1 Hemagglutinin Monoclonal Antibody is supplied in PBS containing 0.02% sodium azide. |
| Form/Appearance | Liquid |
| Concentration | 1 mg/mL |
| Storage | Seasonal H1N1 Hemagglutinin monoclonal antibody can be stored at -20°C, stable for one year. |
| Note | For research use only |
| Application notes | Hemagglutinin antibody can be used for the detection of the Hemagglutinin protein from the H1N1 strain of Seasonal influenza A in ELISA. It will also detect 2 ng of free peptide at 1 mg/mL and does not cross-react with peptide corresponding to the swine-origin influenza A (S-OIV, H1N1) Hemagglutinin. |
| Isotype | IgG1 |
| Clonality | Monoclonal |
| Uniprot ID | B0VX44 |
| NCBI | ACA28844 |
| Dilution Range | Hemagglutinin antibody can be used for the detection of the Hemagglutinin protein from the H1N1 strain of Seasonal influenza A in ELISA. It will also detect 2 ng of free peptide at 1 mg/mL and does not cross-react with peptide corresponding to the swine-origin influenza A (S-OIV, H1N1) Hemagglutinin. |
| Expiration Date | 12 months from date of receipt. |



Recombinant seasonal influenza HA (lane ...



Seasonal Influenza A Hemagglutinin antib...