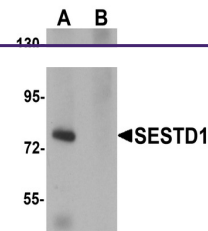
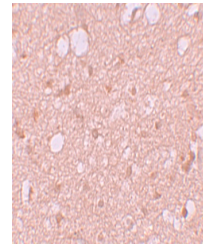

Product Datasheet

SESTD1 Antibody (orb1238995)

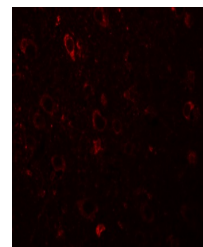
Description	SESTD1 Antibody
Species/Host	Rabbit
Reactivity	Human, Mouse, Rat
Conjugation	Unconjugated
Tested Applications	ELISA, IF, IHC-P, WB
Immunogen	SESTD1 antibody was raised against a 15 amino acid synthetic peptide near the carboxy terminus of human SESTD1. The immunogen is located within the last 50 amino acids of SESTD1.
Target	SESTD1
Preservatives	SESTD1 Antibody is supplied in PBS containing 0.02% sodium azide.
Form/Appearance	Liquid
Concentration	1 mg/mL
Storage	SESTD1 antibody can be stored at 4°C for three months and -20°C, stable for up to one year. As with all antibodies care should be taken to avoid repeated freeze thaw cycles. Antibodies should not be exposed to prolonged high temperatures.
Note	For research use only
Application notes	SESTD1 antibody can be used for detection of SESTD1 by Western blot at 1 µg/mL. Antibody can also be used for immunohistochemistry starting at 5 µg/mL. For immunofluorescence start at 20 µg/mL. Antibody validated: Western Blot in rat samples; Immunohistochemistry in human samples and Immunofluorescence in human samples. All other applications and species not yet tested.
Isotype	IgG
Clonality	Polyclonal
Uniprot ID	Q86VW0
NCBI	NP_835224
Dilution Range	SESTD1 antibody can be used for detection of SESTD1 by Western blot at 1 µg/mL. Antibody can also be used for immunohistochemistry starting at 5 µg/mL. For immunofluorescence start at 20 µg/mL. Antibody validated: Western Blot in rat samples; Immunohistochemistry in human samples



Western blot analysis of SESTD1 in rat b...



Immunohistochemistry of SESTD1 in human ...



Immunofluorescence of SESTD1 in Human Br...