
Product Datasheet

SH3BP4 Antibody (orb1238989)

Description

SH3BP4 Antibody

Species/Host

Rabbit

Reactivity

Human, Mouse, Rat

Conjugation

Unconjugated

Tested

ELISA, IHC-P, WB

Applications
Immunogen

SH3BP4 antibody was raised against an 18 amino acid synthetic peptide from near the carboxy terminus of human SH3BP4. The immunogen is located within amino acids 860 - 910 of SH3BP4.

Target

SH3BP4

Preservatives

SH3BP4 Antibody is supplied in PBS containing 0.02% sodium azide.

Form/Appearance

Liquid

Concentration

1 mg/mL

Storage

SH3BP4 antibody can be stored at 4°C for three months and -20°C, stable for up to one year. As with all antibodies care should be taken to avoid repeated freeze thaw cycles. Antibodies should not be exposed to prolonged high temperatures.

Note

For research use only

Application notes

SH3BP4 antibody can be used for detection of SH3BP4 by Western blot at 1 - 2 µg/mL. Antibody can also be used for immunohistochemistry starting at 5 µg/mL. Antibody validated: Western Blot in rat samples and Immunohistochemistry in human samples. All other applications and species not yet tested.

Isotype

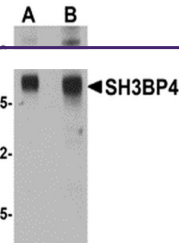
IgG

Clonality

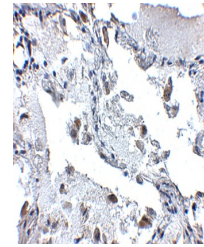
Polyclonal

Uniprot ID
[Q9P0V3](#)
NCBI
[NP_055336](#)
Dilution Range

SH3BP4 antibody can be used for detection of SH3BP4 by Western blot at 1 - 2 µg/mL. Antibody can also be used for immunohistochemistry starting at 5 µg/mL. Antibody validated: Western Blot in rat samples and Immunohistochemistry in human samples. All other applications and species not yet tested.



Western blot analysis of SH3BP4 in rat l...



Immunohistochemistry of SH3BP4 in human

...