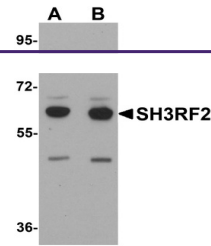
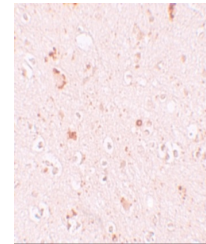

Product Datasheet

SH3RF2 Antibody (orb1238988)

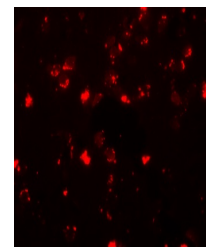
Description	SH3RF2 Antibody
Species/Host	Rabbit
Reactivity	Human, Mouse, Rat
Conjugation	Unconjugated
Tested Applications	ELISA, IF, IHC-P, WB
Immunogen	SH3RF2 antibody was raised against a 17 amino acid synthetic peptide near the carboxy terminus of human SH3RF2. The immunogen is located within the last 50 amino acids of SH3RF2.
Target	SH3RF2
Preservatives	SH3RF2 Antibody is supplied in PBS containing 0.02% sodium azide.
Form/Appearance	Liquid
Concentration	1 mg/mL
Storage	SH3RF2 antibody can be stored at 4°C for three months and -20°C, stable for up to one year. As with all antibodies care should be taken to avoid repeated freeze thaw cycles. Antibodies should not be exposed to prolonged high temperatures.
Note	For research use only
Application notes	SH3RF2 antibody can be used for detection of SH3RF2 by Western blot at 1 - 2 µg/mL. Antibody can also be used for immunohistochemistry starting at 10 µg/mL. For immunofluorescence start at 20 µg/mL. Antibody validated: Western Blot in mouse samples; Immunohistochemistry in human samples and Immunofluorescence in human samples. All other applications and species not yet tested.
Isotype	IgG
Clonality	Polyclonal
Uniprot ID	Q8TEC5
NCBI	NP_689763
Dilution Range	SH3RF2 antibody can be used for detection of SH3RF2 by Western blot at 1 - 2 µg/mL. Antibody can also be used for immunohistochemistry starting at 10 µg/mL. For immunofluorescence start at 20 µg/mL. Antibody validated: Western Blot in mouse samples; Immunohistochemistry in human samples



Western blot analysis of SH3RF2 in 3T3 c...



Immunohistochemistry of SH3RF2 in human ...



Immunofluorescence of SH3RF2 in human br...