

---

## Product Datasheet

### SHISA9 Antibody (orb1238983)

**Description**

SHISA9 Antibody

**Species/Host**

Rabbit

**Reactivity**

Human, Mouse, Rat

**Conjugation**

Unconjugated

**Tested Applications**

ELISA, IF, IHC-P, WB

**Immunogen**

SHISA9 antibody was raised against a 22 amino acid synthetic peptide near the center of human SHISA9. The immunogen is located within amino acids 120 - 170 of SHISA9.

**Target**

SHISA9

**Preservatives**

SHISA9 Antibody is supplied in PBS containing 0.02% sodium azide.

**Form/Appearance**

Liquid

**Concentration**

1 mg/mL

**Storage**

SHISA9 antibody can be stored at 4°C for three months and -20°C, stable for up to one year. As with all antibodies care should be taken to avoid repeated freeze thaw cycles. Antibodies should not be exposed to prolonged high temperatures.

**Note**

For research use only

**Application notes**

SHISA9 antibody can be used for detection of SHISA9 by Western blot at 1 µg/mL. Antibody can also be used for immunohistochemistry starting at 2.5 µg/mL. For immunofluorescence start at 20 µg/mL. Antibody validated: Western Blot in rat samples; Immunohistochemistry in human samples and Immunofluorescence in human samples. All other applications and species not yet tested.

**Isotype**

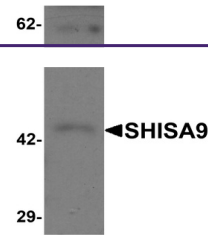
IgG

**Clonality**

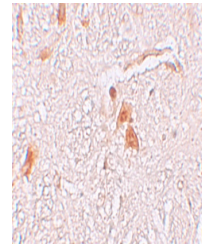
Polyclonal

**Uniprot ID**
[B4DS77](#)
**NCBI**
[NP\\_001138676](#)
**Dilution Range**

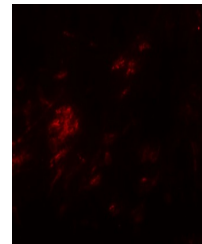
SHISA9 antibody can be used for detection of SHISA9 by Western blot at 1 µg/mL. Antibody can also be used for immunohistochemistry starting at 2.5 µg/mL. For immunofluorescence start at 20 µg/mL. Antibody validated: Western Blot in rat samples; Immunohistochemistry in human samples



Western blot analysis of SHISA9 in rat b...



Immunohistochemistry of SHISA9 in human ...



Immunofluorescence of SHISA9 in human br...