
Product Datasheet

SHOC2 Antibody (orb1238982)

Description

SHOC2 Antibody

Species/Host

Rabbit

Reactivity

Human, Mouse, Rat

Conjugation

Unconjugated

Tested Applications

ELISA, IHC-P, WB

Immunogen

SHOC2 antibody was raised against a 21 amino acid synthetic peptide near the amino terminus of human SHOC2. The immunogen is located within amino acids 30 - 80 of SHOC2.

Target

SHOC2

Preservatives

SHOC2 Antibody is supplied in PBS containing 0.02% sodium azide.

Form/Appearance

Liquid

Concentration

1 mg/mL

Storage

SHOC2 antibody can be stored at 4°C for three months and -20°C, stable for up to one year. As with all antibodies care should be taken to avoid repeated freeze thaw cycles. Antibodies should not be exposed to prolonged high temperatures.

Note

For research use only

Application notes

SHOC2 antibody can be used for detection of Shoc2 by Western blot at 1-2 µg/mL. Antibody can also be used for immunohistochemistry starting at 5 µg/mL. Antibody validated: Western Blot in human samples and Immunohistochemistry in human samples. All other applications and species not yet tested.

Isotype

IgG

Clonality

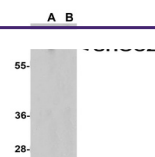
Polyclonal

Uniprot ID
[Q9UQ13](#)
NCBI
[NP_031399](#)
Dilution Range

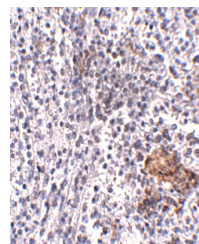
SHOC2 antibody can be used for detection of Shoc2 by Western blot at 1-2 µg/mL. Antibody can also be used for immunohistochemistry starting at 5 µg/mL. Antibody validated: Western Blot in human samples and Immunohistochemistry in human samples. All other applications and species not yet tested.

Expiration Date

12 months from date of receipt.



Western blot analysis of SHOC2 in Jurkat...



Immunohistochemistry of SHOC2 in human

S...