
Product Datasheet

SHQ1 Antibody (orb1238980)

Description

SHQ1 Antibody

Species/Host

Rabbit

Reactivity

Human

Conjugation

Unconjugated

Tested

ELISA, IF, WB

Applications
Immunogen

SHQ1 antibody was raised against a 17 amino acid synthetic peptide near the amino terminus of human SHQ1. The immunogen is located within amino acids 80 - 130 of SHQ1.

Target

SHQ1

Preservatives

SHQ1 Antibody is supplied in PBS containing 0.02% sodium azide.

Form/Appearance

Liquid

Concentration

1 mg/mL

Storage

SHQ1 antibody can be stored at 4°C for three months and -20°C, stable for up to one year. As with all antibodies care should be taken to avoid repeated freeze thaw cycles. Antibodies should not be exposed to prolonged high temperatures.

Note

For research use only

Application notes

SHQ1 antibody can be used for detection of SHQ1 by Western blot at 1 µg/mL. For immunofluorescence start at 20 µg/mL. Antibody validated: Western Blot in human samples and Immunofluorescence in human samples. All other applications and species not yet tested.

Isotype

IgG

Clonality

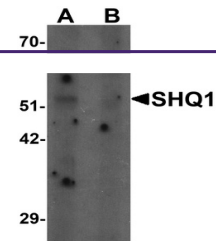
Polyclonal

MW

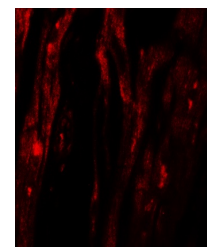
63 kDa

Uniprot ID
[Q6PI26](#)
NCBI
[NP_060600](#)
Dilution Range

SHQ1 antibody can be used for detection of SHQ1 by Western blot at 1 µg/mL. For immunofluorescence start at 20 µg/mL. Antibody validated: Western Blot in human samples and Immunofluorescence in human samples. All other applications and species not yet tested.



Western blot analysis of SHQ1 in human h...



Immunofluorescence of SHQ1 in human hear...