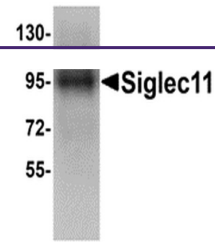
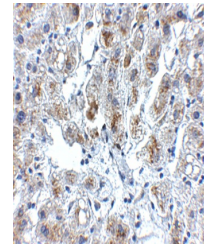

Product Datasheet

SIGLEC11 Antibody (orb1238978)

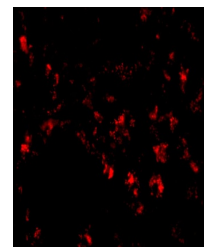
Description	SIGLEC11 Antibody
Species/Host	Rabbit
Reactivity	Human
Conjugation	Unconjugated
Tested Applications	ELISA, IF, IHC-P, WB
Immunogen	Siglec11 antibody was raised against an 18 amino acid synthetic peptide from near the carboxy terminus of human Siglec11. The immunogen is located within the last 50 amino acids of Siglec11.
Target	SIGLEC11
Preservatives	Siglec11 Antibody is supplied in PBS containing 0.02% sodium azide.
Form/Appearance	Liquid
Concentration	1 mg/mL
Storage	Siglec11 antibody can be stored at 4°C for three months and -20°C, stable for up to one year. As with all antibodies care should be taken to avoid repeated freeze thaw cycles. Antibodies should not be exposed to prolonged high temperatures.
Note	For research use only
Application notes	Siglec11 antibody can be used for detection of Siglec11 by Western blot at 1 µg/mL. Despite its predicted size, Siglec11 migrates at a higher than expected molecular weight in SDS-PAGE. Antibody can also be used for immunohistochemistry starting at 5 µg/mL. For immunofluorescence start at 20 µg/mL. Antibody validated: Western Blot in human samples; Immunohistochemistry in human samples and Immunofluorescence in human samples. All other applications and species not yet tested.
Isotype	IgG
Clonality	Polyclonal
Uniprot ID	Q96RL6
NCBI	NP_443116
Dilution Range	Siglec11 antibody can be used for detection of Siglec11 by Western blot at 1 µg/mL. Despite its predicted size, Siglec11 migrates at a higher than expected molecular weight in SDS-PAGE. Antibody



Western blot analysis of Siglec11 in Hep...



Immunohistochemistry of Siglec11 in huma...



Immunofluorescence of SIGLEC11 in human

...