
Product Datasheet

SIK2 Antibody (orb1238974)

Description

SIK2 Antibody

Species/Host

Rabbit

Reactivity

Human, Mouse, Rat

Conjugation

Unconjugated

Tested Applications

ELISA, ICC, IF, WB

Immunogen

SIK2 antibody was raised against a 16 amino acid synthetic peptide near the center of human SIK2. The immunogen is located within amino acids 270 - 320 of SIK2.

Target

SIK2

Preservatives

SIK2 Antibody is supplied in PBS containing 0.02% sodium azide.

Form/Appearance

Liquid

Concentration

1 mg/mL

Storage

SIK2 antibody can be stored at 4°C for three months and -20°C, stable for up to one year. As with all antibodies care should be taken to avoid repeated freeze thaw cycles. Antibodies should not be exposed to prolonged high temperatures.

Note

For research use only

Application notes

SIK2 antibody can be used for detection of SIK2 by Western blot at 1 µg/mL. Antibody validated: Western Blot in human samples; Immunocytochemistry in human samples and Immunofluorescence in human samples. All other applications and species not yet tested.

Isotype

IgG

Clonality

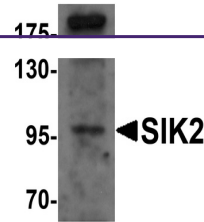
Polyclonal

Uniprot ID
[Q9H0K1](#)
NCBI
[EAW67148](#)
Dilution Range

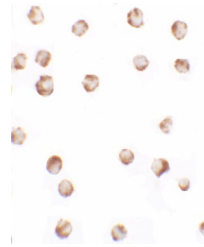
SIK2 antibody can be used for detection of SIK2 by Western blot at 1 µg/mL. Antibody validated: Western Blot in human samples; Immunocytochemistry in human samples and Immunofluorescence in human samples. All other applications and species not yet tested.

Expiration Date

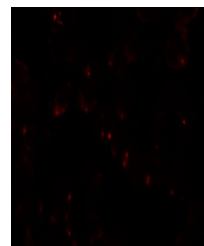
12 months from date of receipt.



Western blot analysis of SIK2 in SW480 c...



Immunocytochemistry of SIK2 in SW480 cel...



Immunofluorescence of SIK2 in SW480 cell...