
Product Datasheet

GEMIN2 Antibody (orb1238972)

Description

GEMIN2 Antibody

Species/Host

Rabbit

Reactivity

Human, Mouse, Rat

Conjugation

Unconjugated

Tested Applications

ELISA, ICC, IF, WB

Immunogen

SIP1 antibody was raised against a 19 amino acid synthetic peptide near the carboxy terminus of human SIP1. The immunogen is located within the last 50 amino acids of SIP1.

Target

GEMIN2

Preservatives

SIP1 Antibody is supplied in PBS containing 0.02% sodium azide.

Form/Appearance

Liquid

Concentration

1 mg/mL

Storage

SIP1 antibody can be stored at 4°C for three months and -20°C, stable for up to one year. As with all antibodies care should be taken to avoid repeated freeze thaw cycles. Antibodies should not be exposed to prolonged high temperatures.

Note

For research use only

Application notes

SIP1 antibody can be used for detection of SIP1 by Western blot at 0.5 - 1 µg/mL. Antibody can also be used for immunocytochemistry starting at 4 µg/mL. For immunofluorescence start at 20 µg/mL. Antibody validated: Western Blot in human samples; Immunocytochemistry in human samples and Immunofluorescence in human samples. All other applications and species not yet tested.

Isotype

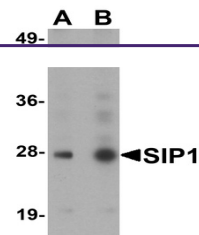
IgG

Clonality

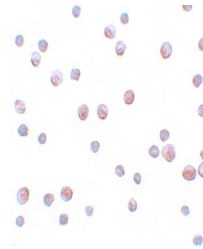
Polyclonal

Uniprot ID
[O14893](#)
NCBI
[AAB82297](#)
Dilution Range

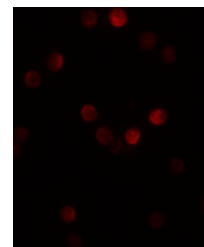
SIP1 antibody can be used for detection of SIP1 by Western blot at 0.5 - 1 µg/mL. Antibody can also be used for immunocytochemistry starting at 4 µg/mL. For immunofluorescence start at 20 µg/mL. Antibody validated: Western Blot in human samples; Immunocytochemistry in human samples and



Western blot analysis of SIP1 in HeLa ce...



Immunocytochemistry of SIP1 in HeLa cell...



Immunofluorescence of SIP1 in HeLa cells...