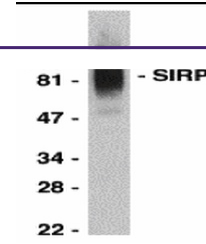


---

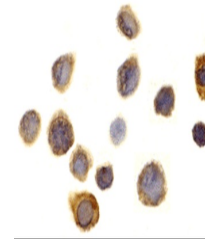
## Product Datasheet

### SIRPA Antibody (orb1238967)

<b>Description</b>	SIRPA Antibody
<b>Species/Host</b>	Rabbit
<b>Reactivity</b>	Human, Mouse, Rat
<b>Conjugation</b>	Unconjugated
<b>Tested Applications</b>	ELISA, ICC, WB
<b>Immunogen</b>	SIRP alpha antibody was raised against a peptide corresponding to 17 amino acids near the carboxy terminus of human SIRP alpha 1. The immunogen is located within the last 50 amino acids of SIRP alpha.
<b>Target</b>	SIRPA
<b>Preservatives</b>	SIRP alpha Antibody is supplied in PBS containing 0.02% sodium azide.
<b>Form/Appearance</b>	Liquid
<b>Concentration</b>	1 mg/mL
<b>Storage</b>	SIRP alpha antibody can be stored at 4°C for three months and -20°C, stable for up to one year. As with all antibodies care should be taken to avoid repeated freeze thaw cycles. Antibodies should not be exposed to prolonged high temperatures.
<b>Note</b>	For research use only
<b>Application notes</b>	SIRP alpha antibody can be used for Western blot at 0.5 - 1 µg/mL. 75 - 110 kDa bands should be detected. Antibody can also be used for immunocytochemistry starting at 1 µg/mL. Antibody validated: Western Blot in human samples and Immunocytochemistry in human samples. All other applications and species not yet tested.
<b>Isotype</b>	IgG
<b>Clonality</b>	Polyclonal
<b>MW</b>	75 - 110 kDa
<b>Uniprot ID</b>	<a href="#">P78324</a>
<b>NCBI</b>	<a href="#">NP_542970</a>
<b>Dilution Range</b>	SIRP alpha antibody can be used for Western blot at 0.5 - 1 µg/mL. 75 - 110 kDa bands should be detected. Antibody can also be used for immunocytochemistry starting at 1 µg/mL. Antibody validated: Western Blot in human samples and Immunocytochemistry in human samples. All other



Western blot analysis of SIRP alpha in T...



Immunocytochemistry of SIRP alpha in THP...